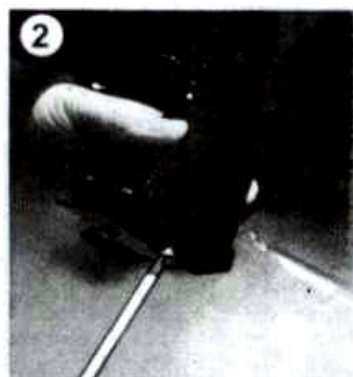


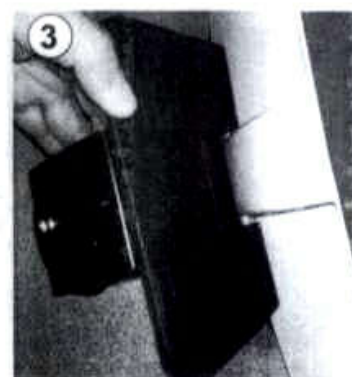
MANUAL DEL  
USUARIO



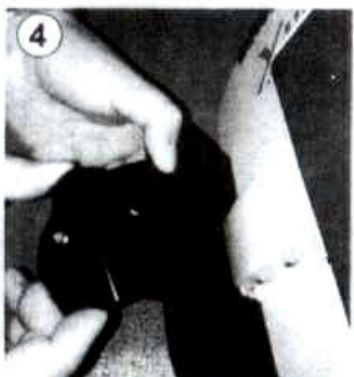
1  
打开包装盒，拿出辅助轮。  
open the box, take out the auxiliary wheel.



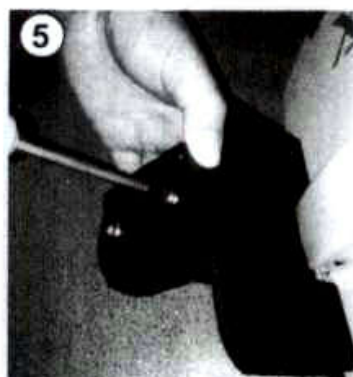
2  
将辅助轮连接铁片螺丝，旋开。  
Unscrew the screw of the auxiliary wheel that connected



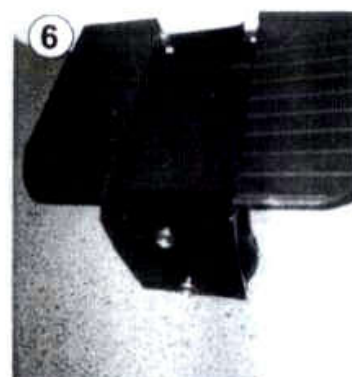
3  
将辅助轮头部叉口跟踏板中间空隙处连接。  
Connect the head of the auxiliary wheel fork with the  
gap at the middle of pedal



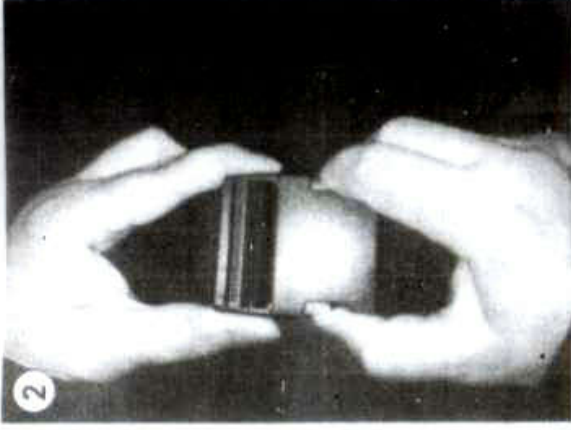
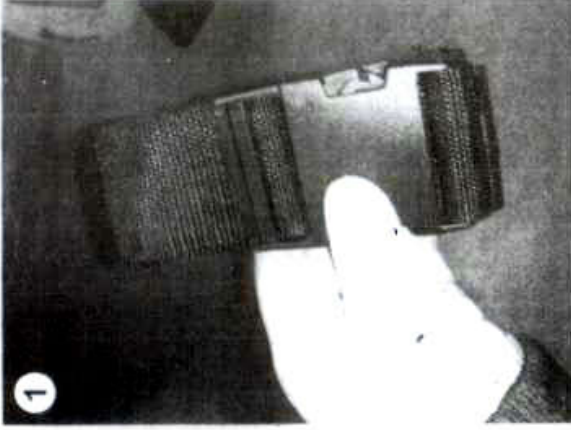
4  
将连接铁片放回原来位置。  
Put the iron back to its original position.



5  
将原先旋开的螺丝重新旋紧。  
Tighten the original screw.



6  
一边辅助轮安装完成，另一边同工序操作。  
The auxiliary wheel installation is complete,  
the other side of the same process operation



拿出背带。

Take out the belt.

按住背带按钮，分离背带。

Push the belt button, take the belt off.

2



将背带套进MACWHEEL的提手，扣紧背带，  
Put the belt through the handle of  
MACWHEEL , buckle the belt.

根据自己身高，调节背带长短。  
According to your height, adjust the belt length.

## **User Manual**

This manual includes safety usage instructions. Please ensure this manual is read and understood before you use the product.

The package contains: Airwheel, charger, extension air-pump tube, user manual, Learning guide, warranty card, and verification certificate.

### **Table of content:**

1. About
2. Safety
3. Specifications
4. Care and Maintenance
5. Repair and Warranty

## 1. About Auto balance wheel

**Auto balance wheel** is the latest high-tech means of transport adopting aerospace attitude control theory, fuzzy algorithm, and gyroscope system to achieve balance by forward and backward leaning. Users can control the vehicle to go forward, accelerate, decelerate, brake or others, by inclining forward or leaning backwards. The left and right balance is similar to the technique of riding a bicycle- achieved through slightly slanting left or right.

The features as a green product that can be easily carried around on a bus or subway, making it a helpful tool in commuting.

## 2. Safety

There are risks to riding or driving every vehicle. **Auto balance wheel** is no exception. Please ensure this manual is read and understood beforehand, and do pay extra attention when riding.

### **Important:**

1. Do not make rapid acceleration or deceleration or over incline forward or lean backwards.
2. Do not use **Auto balance wheel** if there are any risks in accidental falls. Safety first.

**Attention:**

1. Please wear helmet, gloves ,elbow/knee pads or other protection garments.
2. Do not ride **Auto balance wheel** on busy roads or crowded streets.
3. Do not ride **Auto balance wheel** on rough or bumpy surfaces, such as muddy or pebbled roads.
4. Do not ride **Auto balance wheel** on wet, slippery surfaces , especialfy snowy roads.
5. Do not ride **Auto balance wheel** on slopes slanting more than 15° angle.
6. Do not allow children under 12 to use **Auto balance wheel**.
7. Do not ride **Auto balance wheel** in bleak winter conditions.

Other sudden unpredictable risks may occur during use, please ride with care. **Auto balance wheel** will not be responsible for any injuries caused by misuse of the product.



### 3. Specifications

Item	Specification	Parameter	Details
Perform ance	Highest Speed	About 18 Km/hr	
	Range	About 12-15Km	May vary depending on rider's weight, road condition and temperature.
	Safe climbing angle	About 15°	60Kg riders up to 18°
	Battery	132Wh Lithium	Protection circuit with equilibrium function
	Temperature	-10°C~40°C	Best at 10°~30°C
	Capacity	120Kg	
	Charger Voltage	AC 220V 50-60Hz	
	Charging time	About 45 mins.	80%charged in 30 mins
Appear ance	Size	Height 450mm Length 395mm	Largest width 160mm; smallest width 70mm

<b>Weight</b>	Distance of treadle from ground	112mm	When dismounted.
	Tire size	ø360mm	
	Car body	9.8Kg	Without training wheel
<b>Safety Measures</b>	Slanting protection	Average 45° left and right	Machine will deactivate when exceed 45° angle
	Speed limit protection	Turned on at 10K m/h	Front part of treadle will rise to prevent further acceleration
	Low power protection	Turned on when power below 10%	Front part of treadle will descend, speed will decrease until it fully stops
<b>Alert</b>	Power and Error	Power LED indicator	Illuminates when on, flickers when protection activate.
	Battery volume	Power level LED indicator	Four bars when more than 85%; goes off one by one as power level goes down.

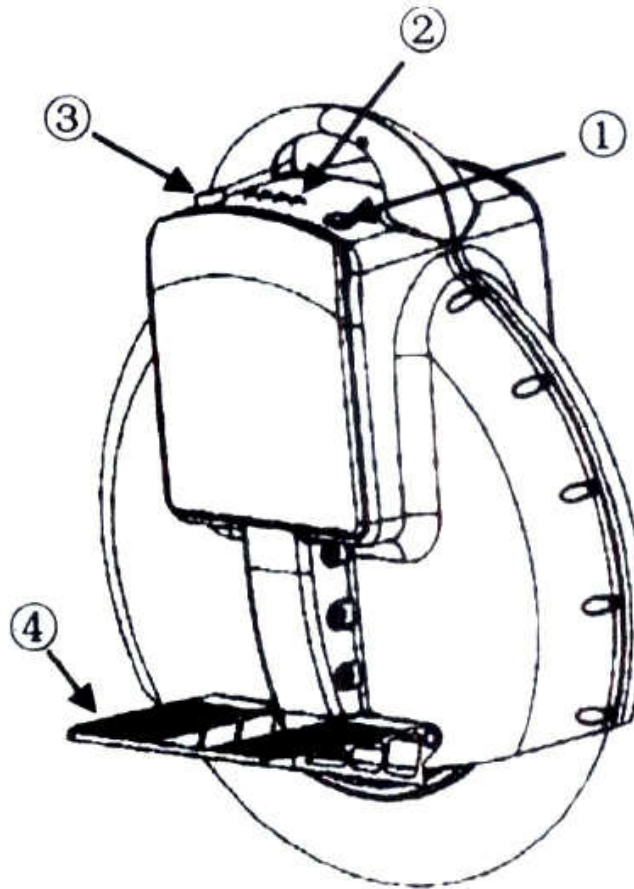


<b>Alert sound</b>	<b>Beep</b>	<b>Beeps at power on; continual beep when power level is low.</b>
<b>Alert sound</b>	<b>Long buzz</b>	<b>Long buzz at side tilts.</b>
<b>Standard accessory</b>	<b>Charger</b>	
<b>Other accessories</b>	<b>Training wheel</b>	

#### 4. Usage

##### i. See diagram for reference

- ① Power
- ② Battery level
- ③ Charger
- ④ Treadle(Foldable)



##### ii. Starting Auto balance wheel

Place **Auto balance wheel** vertically on the ground and turn on power. Power and Battery Level LED will illuminate and

buzzer will beep, then the vehicle is ready to use.

If **Auto balance wheel** tilts either forward or backwards after power is switched on, then wait until it reverts to upright position before riding.

### **iii. Battery level**

A four-bar LED indicator is used to indicate battery level. All four will light up when power level is more than 85% and will to off one by one as the level decreases. Please check power level before usage to ensure there is enough power for the return trip. You may want to charge it every time after use.

When power level is lower than 10%, all four lights will flicker and the buzzer will sound off, The front part of the treadle will lower itself to force you to decelerate and eventually stop. Please do not restart when this occurs to avoid any accidents.

Sustained range will decrease during winter. This is because the battery performance decreases quickly in cold conditions. In-15° C, for example, battery performance is only about half in comparison to that in room temperature.

#### **iv. Speed Control**

To prevent injuries caused by speed, AirWheel comes with a speed control design, When speed exceeds 10Km/h, the front part, of the treadle will rise slowly; when the speed exceeds 16Km/h, the treadle will rise to a 10 angle, to prevent you from inclining forward to further accelerate, As the speed decreases, the angle of the treadle will also lower itself.

**NOTE: When the speed is about to reach its limit, please do not incline forward anymore to force acceleration to prevent injuries.**

#### **v. Side-tilting protection.**

When AirWheel tilts sideways more than a 45° angle, for example when AirWheel falls, the control system will activate side-tilt protection. The machine will stop running immediately to prevent injuries.

The buzzer will sound off a long buzz and the LED will flicker when this is activated.

**To deactivate this, turn the power off, then restart.**

#### **vi.Charging**

plug in the power source after inserting the charger plug, or else the charger will not activate. This can also prevent potential risks, to ensure a safer charge.

**Auto balance wheel** provides a high-power charger. During normal conditions, only 45 mins is needed to be fully charged. 30 mins allows 80% charged. The red light on the charger indicates charging, green indicates charging complete.If not in urgent need, please wait until charging complete before unplugging, because after charging,the protection circuit will perform power flow equilibrium.

#### **vii. Water resistance**

The water resistance level of **Auto balance wheel** is IP 56, allowing it to pass through water of no deeper than 10 mm,It can be used in light rain, but do not steep the vehicle in water or take rides in heavy rain.



## 5. Maintenance

### i. Storage

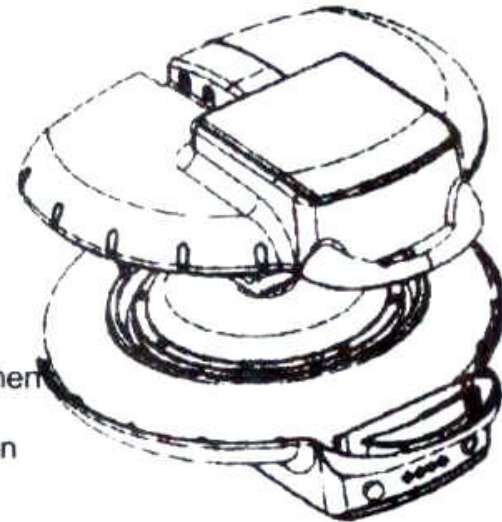
Please store **Auto balance wheel** in a dry place. If left unused, recharge the battery every two months to maintain longevity of the battery.

### ii. Inflation

Use the extension inflation tube to inflate the tire. Without the tube, you will not be able to pump air into the wheel.

### iii. Changing tires

To repair or change the inner or outer tires, open the side of the cover without the indicator lights. First, unscrew the 14 screws on the sides, then the six at the center. Now the side cover can be opened. Give care when disassembling the connecting terminal. No not force disconnection.



**Note:**

A: plugging to power source after maintenance may cause sparks. This is normal. Do not panic.

B: Do not open the side with the lights or the aluminum panel. Opening any part other than instructed in this manual will forfeit your warranty rights.

**6. Repair**

Please keep the warranty and proof of purchase (i.e., receipt).

Limited warranty:

1. 1 year for vehicle ,except battery or other consumables
2. 6months for battery; 1 month for inner and outer tires.

The warranty will not be covered under the following conditions:

1. Malfunction due to misuse
2. Malfunction caused by unauthorized modifications, disassembling, or repair.
3. Accidental damage or malfunction due to unsuitable storage.

4. Unmatched warranty/proof of purchase and product
5. Surface damages
6. Disassembling parts unspecified by this manual
7. Damage or malfunction caused by long rides in the rain or soaking in water