

CF 198B

HAMMER MILL

INSTRUCTION MANUAL

Model NO.	Power	Output (kg/h)	Packing	NW/GW	Remark
			(cm)	(kg)	
CF198B	4kw 380v 50hz 3 phase	150-350	90*58*102	120/140	With gasoline engine.

1. Knowing your machine



1.1 Functioning

The hammer mill is fixed with an engine with a power of RP-driven all kinds of different power. Its working principle is: after the raw materials were put into crushing chamber, the high-speed operated hammer sheets will impact the raw materials over and over again, then the raw materials will be crushed into pre-set size step-by-step. The sieve have the following size: 1.5mm, 2mm, 4mm and 6mm. Then the crushed materials will leak out from the sieve. The draught fan will convey the leaked materials into separator centrifuge, finally, the powder will be discharged down below, and the air will be discharged upper.

Commissioning

2.1 Location

Place the machine under a solid, safe and well-dry location. Keep the machine away from unauthorized person

Do not operate the machine under the temperature of 10 °C.

Before use make sure all bolts and nuts are securely tightened.

2.2 Connection

Warning: The following safety rules must be observed during operation of the hammer mill:

1. Always wear appropriate personal protection equipment. Wear hearing protection, eye protection, non-slip shoes, and tighten clothing. Never operate the machine with long hair.
2. Do not mix very hard objects with the raw materials, for example: metals, stones and so on..
3. Be sure not to get the machine or the connections in contact with water.
4. Be away from open fire during operation.

2.1.1 Install the belt



First, loose the nut and raise the motor in order to install the belt



Second, Install the belt



Third, remove the E-motor until the belt are tighten , then tighten the nut.



Forth , install the belt cover

E-motor start switch



2.3 Crushing the raw materials

1. Check whether the raw material's size is suitable. Please note that the max diameter of the raw materials is 50mm. Be sure not mix the metal and stone in it in order not to damage the machine
2. Place a container at the bottom of the output hole to collect crushed materials.
3. Put a little source material into the feed hopper. Be sure not to fill too much material at once, as the machine can be clogged.
4. Do not stop the machine during pellets pressing operation (except for emergency), otherwise the machine will be clogged for re-starting.
5. Stop the machine by pressing the stop button.



wood blocks



grass hay



coconut shell



cornstalk



waste paper

3. Malfunctions and Maintenance

Troubles	Reasons	Methods
The machine vibrates seriously with loud noises	1. The machine isn't installed firmly on the ground or the bolt is loose.	Install it firmly
	2.The main shaft is bent.	Mend or replace the shaft
	3.The rotors aren't in the state of balance. The weight of the symmetry hammer is not same.	Adjust them in balance.
	4.The flake-hammers aren't in correct order	Adjust the order correctly
	5. The bearing is born.	Clean and replace the bearings.

The productivity is low	1.The flake-hammers are worn seriously.	Turn over them and fix again, or replace them.
	2.The tooth-like plate is worn seriously	Replace it.
	3.The raw feed is too big.	Cut it to small pcs.
The temperature of bearings is over hot.	1.The raw feed is too wet	Dry them firstly
	2.The flow of the raw feed is too fast.	Control the flow properly
	3.The gaps are not correct between the bearings and bearing bases.	Make them correctly
	4.There is dirt in the bearings	Clean by petrol.
	5.The amount of the lubricating oil is not suitable.	Control the oil properly
	6.speed is too high	Use with the suitable motor and pulley
	7.the bearing is worn	Replace bearing
The feed is out of wind inlet.	1. The feed flow is too fast or not equal	Control feeding speed
	2.The voltage and speed of motor is low	Regulate the speed of motor or feeding speed
	3.The transmit pipe is jammed	Dredge the pipe
	4.the wind inlet is too big or small	Regulate the wind inlet

ATTENTION!

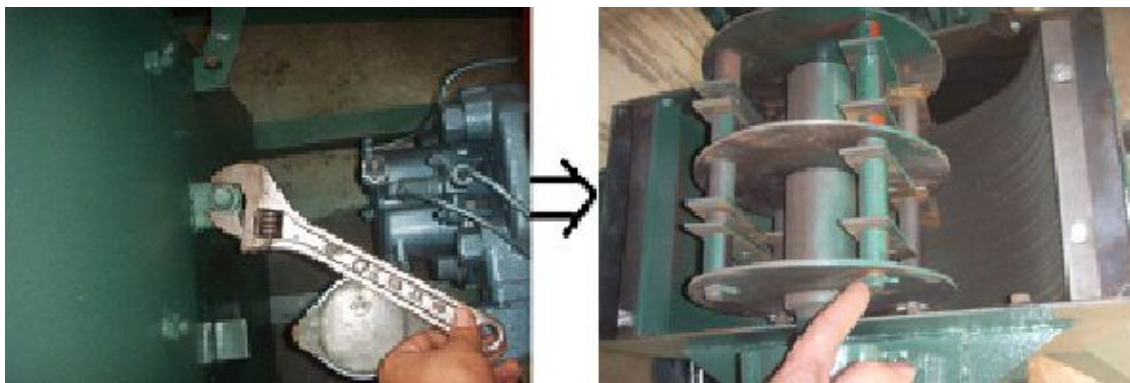
Be away from moving parts. Failure to do this will result in serious injury. Stop the gasoline engine before maintenance or repair.

Regularly check and re-tighten the screws and nut due to vibration.

4. To replace the hammer sheets and sieve

4.1 Replace the hammer sheets.

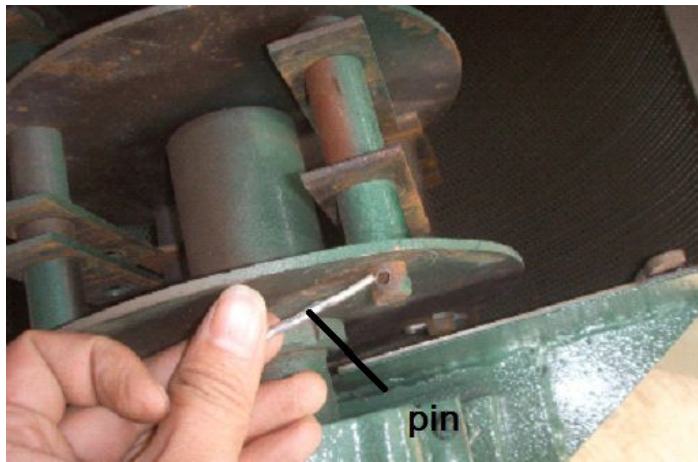
1. Open the machine, then you can see the hammer sheets and sieve clearly.



2. Remove the pin which to fix the lateral axis.



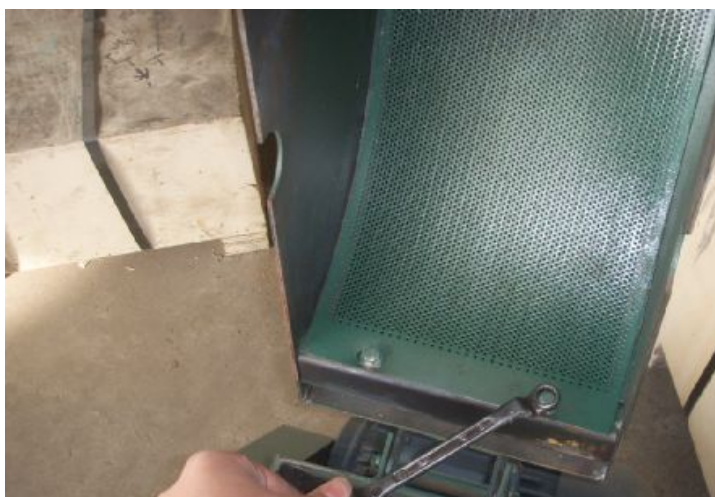
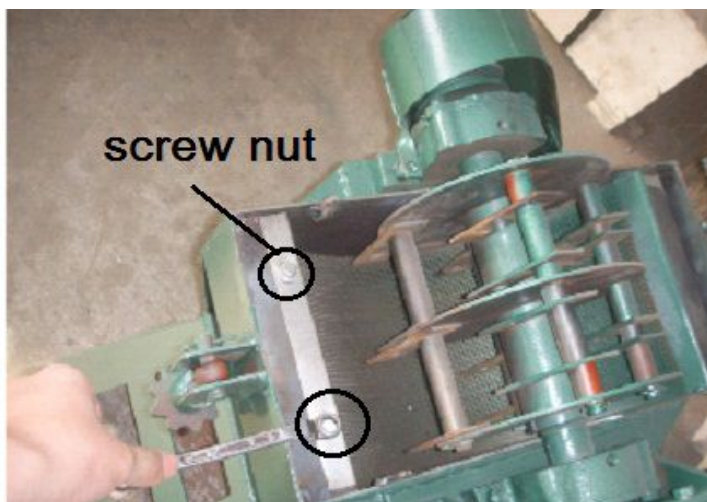
3. Install the new hammer sheets, then plug the pin.



They are 4 hammer sheets on every shaft. And they are 4 shafts totally.

4.2 Replace the sieve

1. Loosen the nuts which to fix the sieve by spanner. There are two sieves.

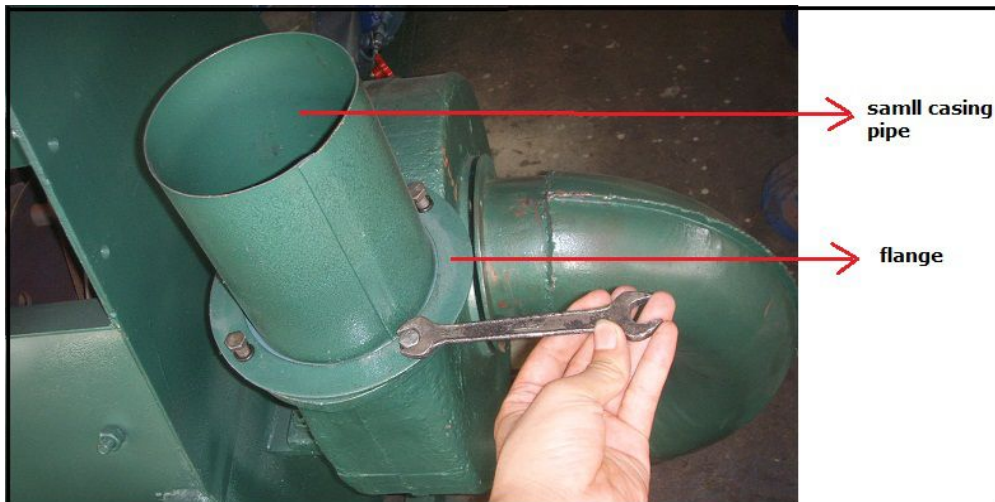


2. Remove the sieve, the replace a new Two.



Install the cyclone

1. Install the small casing pipe with flange



2. cover the big bend pipe on the small casing pipe.



3. Install the bent pipe



Install the big pipe of the cyclone.

The sawdust can come out from the cyclone, you can assort the bag with the cyclone.

The plate install



Block the below discharge port with the plate if you install the cyclone ,make sure the sawdust come out from the cyclone.

Install the Hopper



Tighten all the hopper nut with Wrench before use the machine