

Misting Stand Fan

ASSEMBLY INSTRUCTIONS

Thanks very much for purchasing this product,
please read carefully before using it

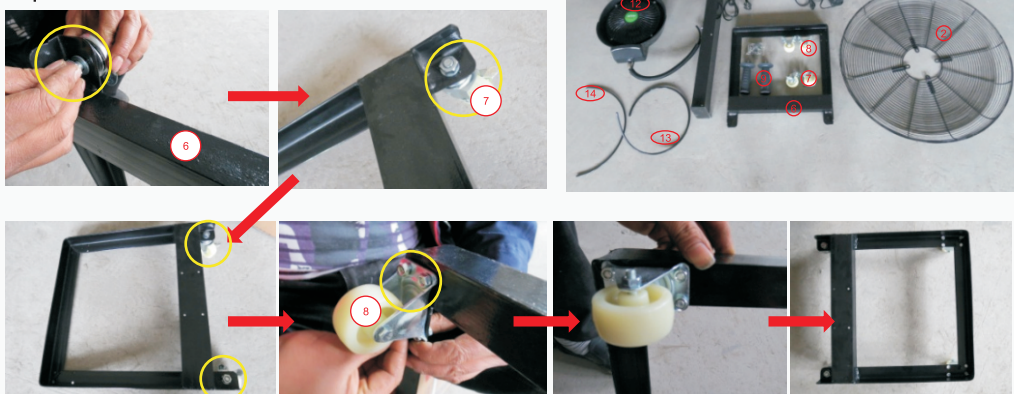
Model No.: FS6-65B
FS6-75B

※ Attention ※

- Please place it where children can not touch easily.
- Do not run the mist maker separately while the fan switched off.
- Do not put a finger into the shroud.
- Do not use it when it is anomalous.

INSTALLMENT

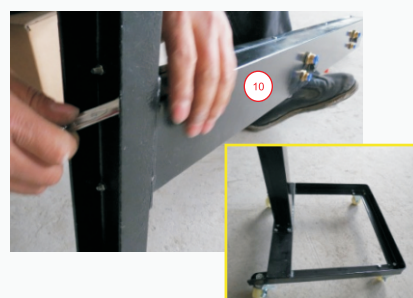
1. Fix rear wheels and front wheels on the frame orderly by screws. as below pictures. So do the reverse.



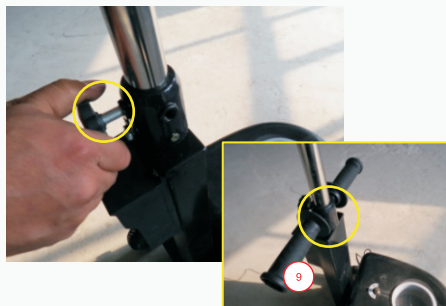
2. Put control box on the stand pole by screws FS6-65B, FS6-75B



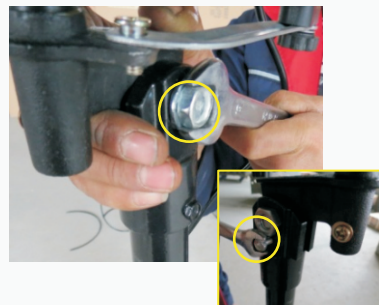
3. Place straight lever on frame by screws.



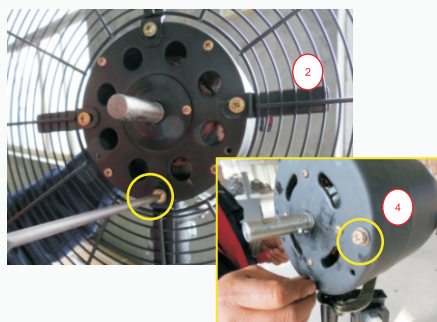
4. Insert the stainless pipe into stand pole and tight by bolt and knobs.
FS6-65B, FS6-75B



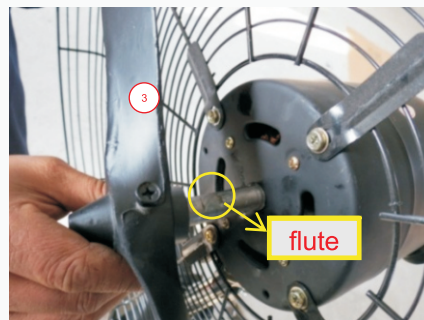
5. Place the fan motor on the joint of straight lever and tight by bolt and small screw.



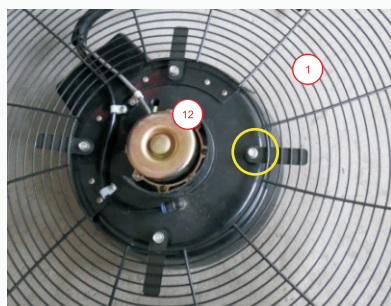
6. Take off screws from fan motor, then fix the rear shroud on by screws.



7. Place the blade on the axle of fan motor at right way, and tight by screw.



8. Place the front shroud on the mist maker by screws.



9. Suspend the front Shroud on the rear shroud, and lock by side clamp.



10. Put water tank on the trolley.



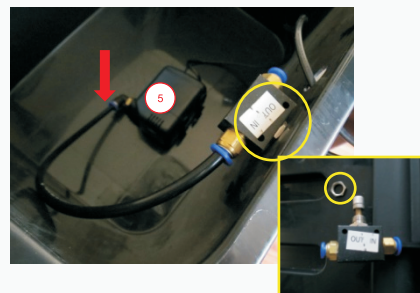
11. Wrap all cables by plastic pipe
FS6-65B, FS6-75B



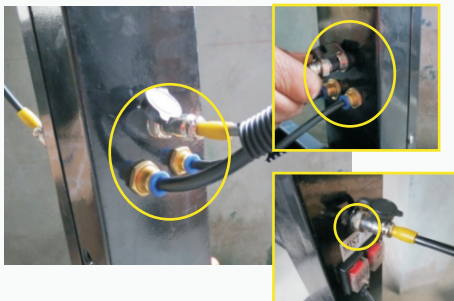
12. Put water pump inside the water tank and take out its plug from hole of cover of water tank.
FS6-65B, FS6-75B



13. Put water pump inside the water tank and take out pump plug from side hole of water tank. Turn the ring of adjustable mist valve, and fix it on the side hole.
FS6-65B, FS6-75B



14. Connect the all water inlet pipe and water outlet pipe accordingly; and insert the pump plug into the socket in the straight lever.
FS6-65B, FS6-75B



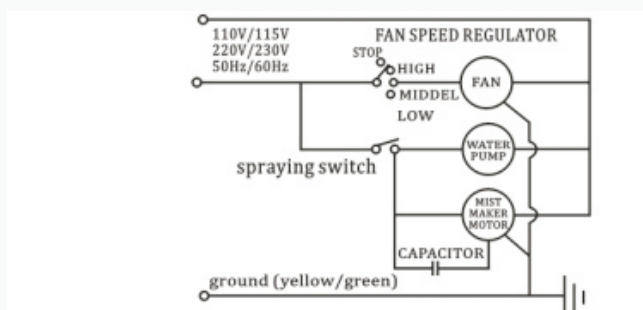
15. Connect all female plugs with sockets accordingly
FS6-65B, FS6-75B



MAINTENANCE:

1. Clean the blade and other parts to ensure the fan run smoothly before it switches on.
2. The voltage and circle should be accordance with the statement on the label.
3. Speed rate adjustable by spinning switch on the fan motor
4. Full fill water into tank before running the mist maker.
5. The mist flow can be controlled by water valve.
6. Allow to turn off mist switch if no need to spray.
7. Do not put hand or anything into the shroud.
8. Do not use the pump without water and please timely adding clear water inside, take attention not to wet the socket and plug.
9. The linkage is connected to the center hole of the rotating bracket at the end of fan motor, the fan swings.
10. Do not place the working fan on the rough ground.
11. Power off the working fan immediately under the condition of abnormal noise, burning or damage etc. and contact the dealer for maintenance.

WIRING DIAGRAM



FS6-65B

FS6-75B

Commodity details:

Model No.: FS6-65B/FS6-75B
Size: 71X53X155-177cm or 178cm
Weight: 25kgs / 23kgs
Rated Vol.: 220-240V, 50/60Hz
Power: 240W, 280W
Tank Capacity: 41L
Mist Flow: approx 16L/h.
Continuous using time: 3hours