

SAFETY OPERATOR'S MANUAL

FLAIL MOWERS

MODEL: AGL



IMPORTANT

READ THESE INSTRUCTIONS BEFORE INSTALLING AND USING
THIS IMPLEMENT

INTRODUCTION	2
CHAPTER 1. SAFETY PRECAUTIONS	2
1.1 SAFETY FIRST	2
1.2 GENERAL SAFETY	2
1.3 OPERATING SAFETY	3
1.4 STORAGE SAFETY	4
1.5 MAINTAINENCE SAFETY	4
CHAPTER 2. SAFETY DECALS	5
CHAPTER 3. PRODUCT SPECIFICATIONS	9
3.1 PRODUCT NO.	9
3.2 IMPLEMENT SPECIFICATIONS	9
3.3 IDENTIFICATION OF THE IMPLEMENT	10
CHAPTER 4. PRODUCT OPERATION	11
4.1 CHECKING BEFORE OPERATING	11
4.2 ADJUSTMENTS	11
4.3 DRIVE BELT ADJUSTMENT	12
4.4 STARTING UP	13
4.5 HYDRAULIC CONNECTION	14
4.6 GREASING AND LUBRICATION	14
CHAPTER 5. SERVICE AND MAINTAINENCE	15
5.1 SERVICE	15
5.2 MAINTAINENCE	15
5.3 STORAGE	17
5.4 OPERATION AFTER STORAGE	17
CHAPTER 6. TROUBLE SHOOTING	18
CHAPTER 7. PART LIST	19
HANMEY IMPLEMENT WARRANTY	25
NOTES	26

CHAPTER 1. SAFETY PRECAUTIONS



Before operating the Flail Mower read the following safety instructions. Failure to comply with these warnings may result in serious injury or death.

CONGRATULATIONS! On the purchase of your new Hanmey Flail Mower. This information is to assist you in preparing, operating and maintaining your flail mower. Please read and understand the information completely before operating your mower, paying special attention to all the safety details. Keep this manual handy for a ready reference.

1.1 SAFETY FIRST

YOU are responsible for the SAFE operation and maintenance of your Flail mower. YOU must ensure that you and anyone else who is going to operate, maintain or work around the Flail mower is familiar with the operating and maintenance procedures and related SAFETY information contained in this manual. This manual will take you step-by-step through your working day and alert you to all good safety practices that should be adhered to while operating the Flail mower.

Remember, YOU are the key to safety. Good safety practices not only protect you but also the people around you. Make these practices a working part of your safety program. Be certain that EVERYONE operating this equipment is familiar with the recommended operating and maintenance procedures and follows all the safety precautions. Most accidents can be prevented. Do not risk injury of death by ignoring good safety practices.

- 1 Flail mower owners must give operating instructions to operators or employees before allowing them to operate the machine.
- 2 The most important safety feature on this equipment is a SAFE operator. It is the operator's responsibility to read and understand ALL Safety and Operating instructions in the manual and to follow these. All accidents can be avoided.
- 3 A person who has not read and understood all operating and safety instructions is not qualified to operate the machine. An untrained operator jeopardise himself and bystanders to possible serious injury or death.
- 4 Do not modify the equipment in any way. Unauthorized modification may weaken the function and/or safety and could affect the life of the equipment.
- 5 Think SAFETY! Work SAFELY!

1.2 GENERAL SAFETY

1. Read the operator's Manual and all safety signs carefully before operating, maintaining, adjusting or removing the Flail mower.
2. Do not allow passengers to ride on the Flail mower
3. Operate only at safe distance from bystanders. Clear the area of people, especially small children, before starting.
4. Stop PTO before dismounting tractor.
5. Keep feet and hands from under Flail mower at all times.
6. Keep all shields in place. If shield removal becomes necessary for repairs, replace the shield prior to use.

CHAPTER 1. SAFETY PRECAUTIONS

7. Do not stay between the tractor and the Flail Mower.
8. Do not approach the Flail mower until all motion has stopped.
9. All rotary blades have the ability to discharge objects at high speeds, which could result in serious injury to bystanders or passers-by, use with extreme caution.
10. Place all controls in neutral, stop tractor engine, set park brake, remove ignition key and wait for all moving parts to stop before servicing, adjusting, repairing, attaching or removing.
11. Review safety related items annually with all personnel who will operate or maintain the Flail mower.
12. Do not operate machine if you feel unwell or physically unfit, in which case you should stop working.
13. This machine was designed with safety very much in mind. However, there is no real substitute for caution and attention in preventing accidents. Once an accident has happened, it is too late to think about what you should have done.
14. Use a tractor equipped with a Roll Over Protective Structure (ROPS). Always wear your seat belt. Serious injury or even death could result from falling off the tractor – particularly during a turnover when the operator could be pinned under the ROPS or the tractor.
15. Never exceed the limits of a piece of machinery. If its ability to do a job, or to do so safely, is in question – **DON'T TRY IT**.
16. Clear working area of stones, branches or hidden obstacles that might be hooked or snagged, causing injury or damage.

1.3 OPERATING SAFETY

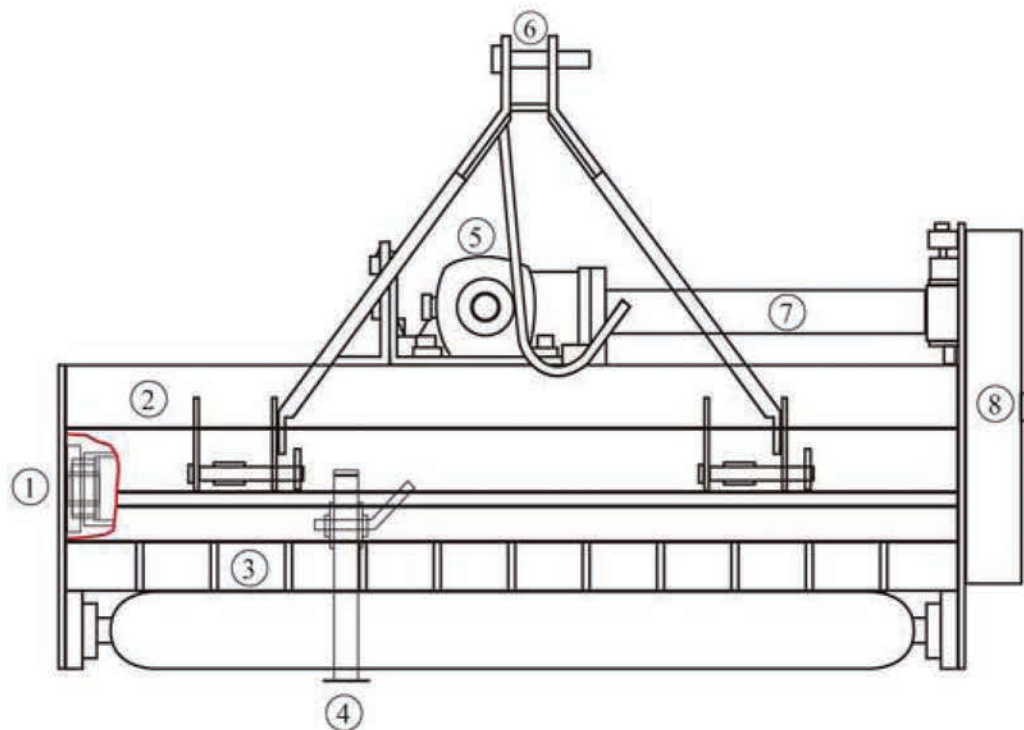
1. Read and understand the Operator's Manual and all safety signs before operating, servicing, adjusting, repairing or removing.
2. Do not allow riders.
3. Install and secure all guards and shields before starting or operating.
4. Keep hands, feet, hair and clothing away from moving parts.
5. Place all controls in neutral, stop tractor engine, set park brake, remove ignition key and wait for all moving parts to stop before servicing, adjusting, repairing, attaching or removing.
6. Place all tractor and machine controls in neutral before starting.
7. Never start or operate machine unless sitting on tractor seat.
8. Clear the area of bystanders, especially small children, before starting.
9. Stay away from PTO shaft and machine when engaging PTO. Keep others away.
10. Use warning lights on tractor when transporting.
11. Do not put hands or feet under machine while tractor engine or machine is running.
12. Do not operate Flail mower in the raised position.
13. Objects can be thrown out from under machine with sufficient force to severely injure people. Stay away from machine when it is running. Keep others away.
14. Always know what you are cutting. Never operate Flail mower in an area that has hidden obstacles. Remove sticks, stones, wire or other objects from working area before starting.
15. Review safety instructions with all operators annually.

1.4 STORAGE SAFETY

1. Store the machine in an area away from human activity.
2. Do not permit children to play on or around the stored machine.
3. Store the machine in a dry, level area.
4. Clean grease and oil as required and protect it from the elements.

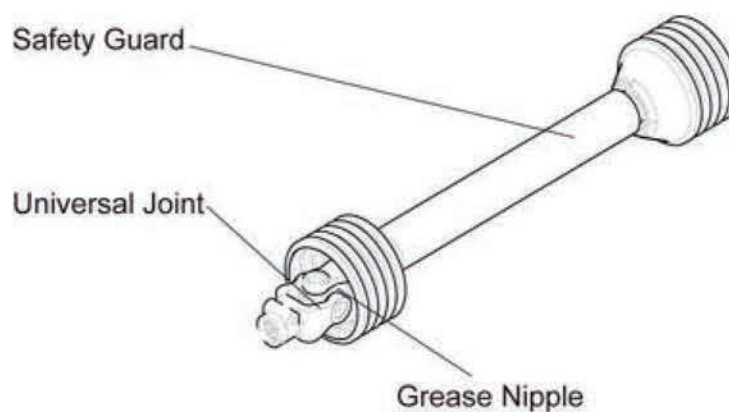
1.5 MAINTENANCE SAFETY

1. Good maintenance is your responsibility. Poor maintenance is an invitation to trouble.
2. Follow good shop practices.
3. Keep service area clean and dry.
4. Be sure electrical outlets and tools are properly grounded.
5. Use adequate light for the job at hand.
6. Make sure there is plenty of ventilation. Never operate the engine of the tractor in a closed building. The exhaust fumes may cause asphyxiation.
7. Before working on this machine, shut off the engine, set the brakes, and remove the ignition key.
8. Never work under equipment unless it is secured by a mechanical stand.
9. Use personal protection devices such as eye, hand and hearing protectors, when performing any service or maintenance work. Use heavy gloves when handling blades.
10. Only use genuine parts for service and maintenance.
11. A fire extinguisher and first aid kit should be kept readily accessible while performing maintenance on this equipment.
12. Periodically tighten all bolts, nuts and screws and check that all pins are properly installed to ensure unit is in a safe condition.
13. When completing a maintenance or service function, make sure all safety shields and devices are installed before placing machine in service.



1. Blade axle	2. Blade axle cover	3. Combined fender
4. Stand	5. Gear box	6. Top Link Bracket
7. Transmission shaft	8. Belt & Pulley Cover	

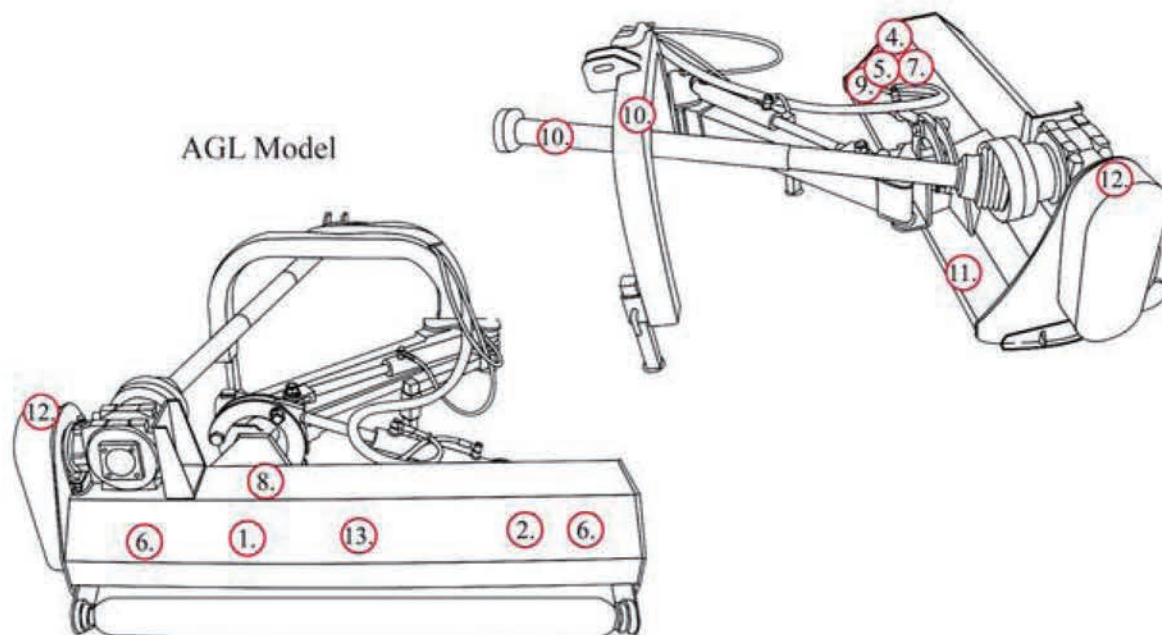
PTO Shaft





CHAPTER 2. SAFETY DECALS

SAFETY & MODEL DECAL

The position of safety decals are shown in the illustrations below. Good safety requires that you familiarize yourself with the various safety signs, and increase your **SAFETY AWARENESS**.



1. **HANMEY**
2. **EFG-125**

3.  **AGRI-MACHINERY** 

Flail Mower

Type	
Dimensions L x W x H (mm)	
Structure Weight (kg)	
Serial No	
Date	

4. **ST:**

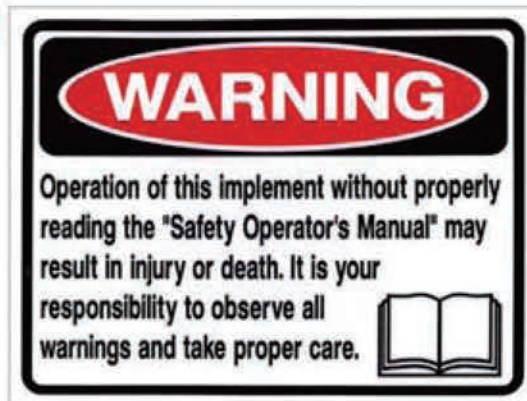
5. **PD** 

CHAPTER 2. SAFETY DECALS

6.



7.



8.



9.



10.



11.



12.



13.



14.



15.



16.





3.1 Product No.

FLAIL MOWER MODELS

AGL

Verge Hydraulic Reach Flail, Medium Duty

3.2 Implement Specifications

MODELS	AGL-125	AGL-145
Tractor HP	18-25	20-30
3.P.L	Cat-1	Cat-1
Length	1380	1580
Width	680	680
Height	570	570
Weight	250kg	270kg
Cutting Width	1215	1415
PTO	540r/min	540r/min
Gear Box HP	50HP	50HP
	20	24
	40	48

The Flail mower is PTO powered with six available models, in category I three point linkage, from 3 to 6 foot for tractors up to 55 hp.

CHAPTER 3. PRODUCT SPECIFICATIONS

Uses:

Perfect for use after storms when debris is scattered throughout areas usually maintained with normal mowers ~ Multi-purpose machines for mulching foliage and sticks ~ ideal for thick grass, sticks, undergrowth and light vine mulching ~ vegetable & pasture topping ~ roadside maintenance.

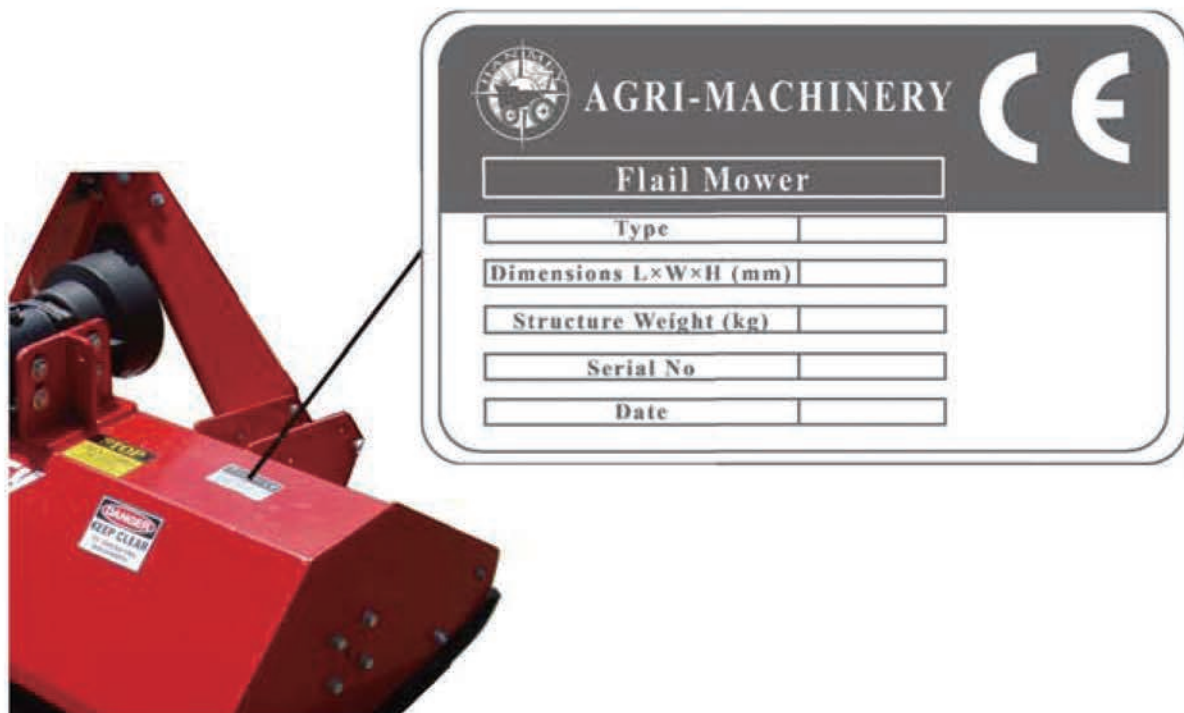
Features:

Cutting height controlled by adjustable skids ~ high strength mulching blades ~ belt driven ~ safety flaps to prevent debris being thrown ~ extra strong and designed with safety in mind ~ support leg for storage ~ solid hitch ~FC-120/160 models include hydraulic flail catcher.

3.3 Identification of the Implement

An Identification plate is affixed to the frame of each implement. It contains the "CE" Certification brand and information about: the Manufacturer, Model, Serial Number, Year of Manufacture and Weight.

CE Identification Plate



4.1 CHECKING BEFORE OPERATING

Before operating the machine, the following areas should be checked off:

1. Before starting up the machine, check and Lubricate all grease points, on the machine and drive shaft.
2. Use only an agricultural tractor with horsepower within limits of the implement.
3. Check that the machine is properly attached to the tractor. Be sure retainers are used on the mounting pins.
4. Be sure extra weights are mounted on the front of the tractor, if required.
5. Check the oil level in the gearbox. Add as required.
6. Check that the tractor PTO shaft turns freely and that the machine driving shaft can telescope easily.
7. Check the blades. Be sure they are not damaged or broken and swing freely in their mount. Repair or replace as required.
8. Check and tighten the blade bolts.
9. Check for entangled material in all rotating parts. Remove this material.
10. Install and secure all guards, doors and covers before starting.
11. Before installing the PTO, ensure the engine is stopped and the PTO shaft is in safe working order.
12. All other people shall leave the area before connecting the driving power from the tractor. Keep the output of the tractor at 540 RPM.
13. Before cleaning, repairing and lubricating the machine, stop the motor and take the key away with you.
14. When the PTO shaft is not connected with the tractor, support it through the frame to protect it from lying in the dirt.
15. Don't approach the machine when it is operating.

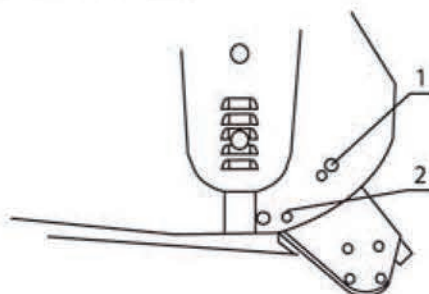
4.2 ADJUSTMENTS

ADJUSTING THE HEIGHT

To get the most out of your flail mower, it should be set within the recommended height.

To save fuel and power, and reduce wear and tear, the cutting height must be regulated correctly.

When adjusting the working height, loosen screw (1), remove screw (2) on both sides; The roller height (see following drawing) can be adjusted by alligning the selected hole in the roller support bracket at position 2. The lowest hole is the highest working height; put the screw (2) into the selected hole; tighten screw (1) and screw (2).



FLAIL MOWER ADJUSTMENT

1. On a flat piece of ground, attach the Flail Mower to the Tractor using the three point linkage
2. Use a solid adjustable top link
3. Lower the three point linkage to its lowest position
4. With the roller at the rear in contact with the ground, adjust the length of the top link so that the lower edge at the side of the flail mower is parallel with the ground
5. Rotate the blade drum by hand so that a row of blades hang vertically towards the ground.
6. Measure the clearance between the bottom of the extended blades and the ground.
 - Minimum 50mm
 - Note in rough or lumpy paddocks the clearance needs to be increased to ensure that the blades dont impact the ground in operation.
7. Adjust the roller height to increase or decrease the blade clearance as required
8. Go through steps 4 to 7 until the required clearance is achieved.

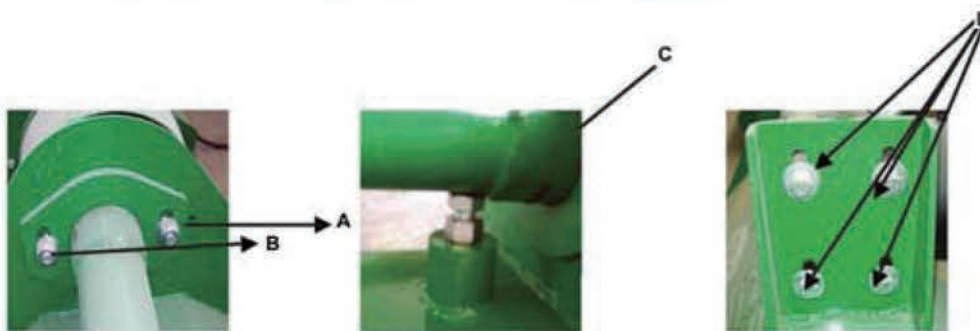
When the Flail Mower has been set up with the required tolerances:

Operate the Flail Mower with tractor in low range and the PTO delivering 540 RPM

4.3 DRIVE BELT ADJUSTMENT

Loosen the Screw A and B that locks the support shaft and loosen the counter nut C.

Loosen the screws that lock the gear box on the mounting plate D.



Adjust the drive belt tension. The correct belt tension is achieved when the belt can be deflected by the belt thickness about 10mm at the center point between the pulleys.

Align the gearbox so the drive shaft is parallel with the body.

Use a straight edge to make sure the belt pulleys are inline and running true. If misaligned, call your dealer or service agent for technical support.

Fit the safety covers and tighten the mounting bolts before operation.



Approx. 10mm
deflection

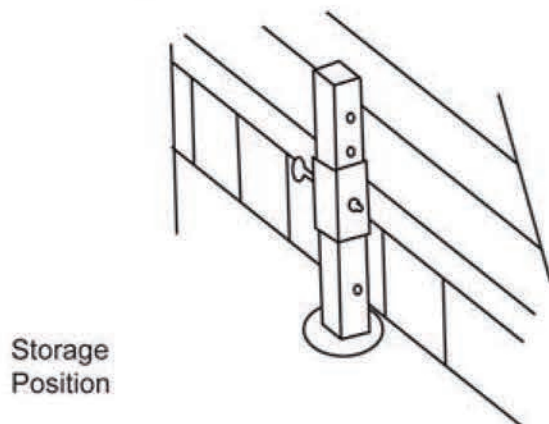


Align with a
Straight Edge

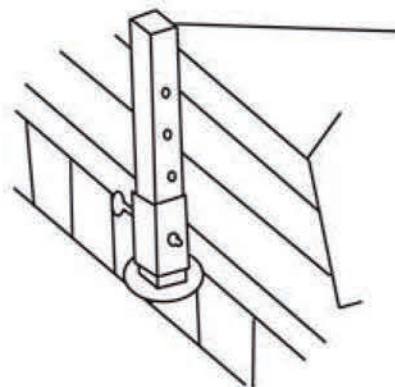
4.4 STARTING UP

Before starting the machine, check and adjust the following items:

- Drive belt tension.
- Gearbox oil level.
- Grease nipples on bearings and PTO shaft.
- All bolts, nuts and screws.



Storage
Position



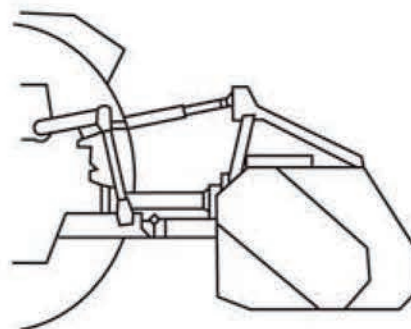
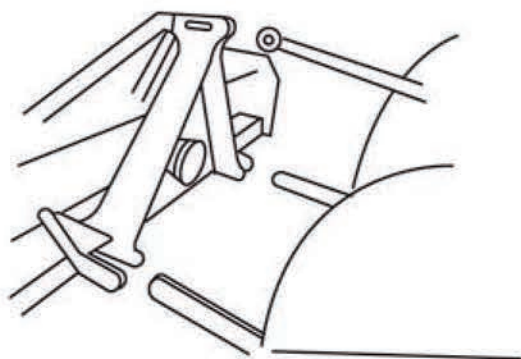
Operating
Position

In order to keep the machine stable, lower the adjustment stand when the machine is stopped (see above drawing).

Follow all safety precaution detailed in this manual.

The machine is equipped with a standard category one, three point linkage.

Back the tractor into position in front of the flail mower. Lower the tractor hydraulic lift arms. Turn the tractor off. Maneuver the implement by hand and attach the lower link arms to the lower link pin. Ensure they are secured with lynch pin. Attach the top link to the top link bracket. Adjust the lower link sway chains to allow minimal lateral movement. Attach the PTO shaft to the Tractor PTO ensuring it has been cut to the required length.



4.5 HYDRAULIC CONNECTION

- Switch the engine off, set the handbrake and remove the ignition key. Push the hydraulic lever to release pressure at the remotes. Connect the implement's hydraulic hoses to the remotes using the quick couplers, having checked the quick couplers are clean and in good condition.
- Start the engine and activate the hydraulics to check the connection. Check there are no oil leaks at the connection or the implement.
- Before disconnecting, stop the engine and move the remotes lever back and forth to release the hydraulic oil pressure as previously mentioned.

4.6 GREASING AND LUBRICATION

Each 4 hours of work:

- Check and tighten nuts and bolts
- Grease with lithium based grease when it is indicated by the symbol GREASE



After 50 hr of work, check and fill the gearbox to the required level, using oil type SAE 90 EP API GL4 Oil.

Each 100 hr of work:

Check the gearbox oil level. Replace as required.

5.1 SERVICE

FLUIDS AND LUBRICANTS

1. Grease:
Use multi-purpose lithium based grease.
2. Gear Box Oil:
Use SAE 90 Gear oil.
3. Storing Lubricants:
Your machine can operate at top efficiency only if clean lubricants are used. Use clean containers to handle all lubricants. Store them in an area protected from dust, moisture and other contaminants.

GREASING

1. Use a hand-held grease gun for all greasing.
2. Wipe grease nipple with a clean cloth before greasing, to avoid injecting dirt and grit.
3. Replace broken nipples immediately.
4. If nipples will not take grease, remove and clean thoroughly. Also clean lubricant passageway. Replace nipple if necessary.

5.2 MAINTENANCE

The period recommended is based on normal operating conditions. Severe or unusual conditions may require more frequent maintenance.

HOURS OR DAILY MAINTENANCE

- Check all nuts and bolts, tighten as required.
- Check the blade and blade bolts every day and replace the damaged parts. Don't install damaged, worn and unbalanced blade. Replace sleeves as they become worn.

NOTE:

The operator should put on gloves and use suitable tools before changing blade.

- Check the oil in gearbox. Fill up to line if necessary.
- Pump grease into each grease nipple three to five times.
- Clean the implement; remove grass and mud.

SEASON MAINTENANCE

- Check the machine as in the terms of daily maintenance.
- Check the oil in gearbox; replace it if it is contaminated.
- Check the blade spindles for wear and tear. If worn, disassemble and clean them and replace them if it is necessary, grease as required.

ANNUAL MAINTENANCE

- Thoroughly Clean mud and grass off the machine.
- Check and clean blade axles. Replace seals and grease as required.
- Check all blades, replace them if they are wear-out or damaged.
- Repair or replace the side skirts back to their original size and shape. Replace damaged or broken protective devices.

CHAPTER 5. SERVICE AND MAINTENANCE

GEAR BOX MAINTENANCE

The oil should be drained out and replaced after the first 50 hours of operation. Then the oil should be changed every 250 hours, or at least once a year.

Drain oil from the gearbox thoroughly. Check and clean it. Fill with new gear oil up to the dedicated oil level.

The draining procedure is as follows: remove the draining bolt under the gear box, so that the oil drains off. After the oil is drained out, put the plug back and fill with gear oil up to the dedicated oil level.

	8hrs/ Daily			50hrs/Weekly			Annually		
Lubricate PTO Shaft	✓			✓			✓		
Lubricate Caster Wheels	✓			✓			✓		
Lubricate Blade Spindle	✓			✓			✓		
Check Gear Box Oil Level				✓			✓		
Clean Machine							✓		
Lubricate and Clean PTO Shaft Cover							✓		

PTO SHAFT MAINTENANCE

The PTO shaft is designed to telescope to allow for dimensional changes as the machine goes through its operating range. A tubular guard encloses the driving components and is designed to turn relative to the driving components. The shaft should telescope easily and the guard turn freely on the shaft at all times. Annual disassembly, cleaning and lubrication is recommended to insure that all components function as intended. To maintain the shaft, follow this procedure:

1. Remove the shaft from the machine.
2. Pull shaft apart.
3. Use a screwdriver to pry the tabs out of the sleeves on each end.
4. Pull the shaft out of the plastic tubular guard.
5. Use a solvent to clean the male and female portions of the telescoping ends.
6. Apply a light coat of grease to each end.
7. Clean the grooves on each end where the tabs are located. Clean each tab also.
8. Apply a light coat of grease to each groove.
9. Insert the shaft into its respective guard and align the slots with the groove.
10. Insert the tabs through the slots and seat in the groove.
11. Check that each guard turns freely on the shaft.
12. Assemble the shaft.
13. Check that the shaft telescopes easily.
14. Replace any components that are damaged or worn.
15. Install the shaft on the machine.

GEARBOX MAINTENANCE

The gearbox used on the Flail mower will give many years of trouble-free service with minimal maintenance requirements. Maintain the gearbox by following this procedure:

Oil Level:

- Remove the level plug from the rear or side of the gearbox.
- Add oil through the filler plug located on top of gearbox until oil comes out of the level plug.
- Add through the level plug if required.
- If gearbox has a dipstick on filler plug, then fill to indicator mark.

IMPORTANT: Check the oil level only when the unit is cold and the machine is on the level.

5.3 STORAGE

- Clean the machine inside and out so as to avoid corrosion.
- Don't Spray water on the rolling bearing if you clean the machine with high pressure sprayer.
- Check and clean the universal joint, driving belt press roller, or replace them if they are not in good condition.
- Spread oil on all parts required.
- Recoat the parts rubbed and damaged for anti corrosion.
- Store the machine in a dry, level area.

5.4 OPERATION AFTER STORAGE

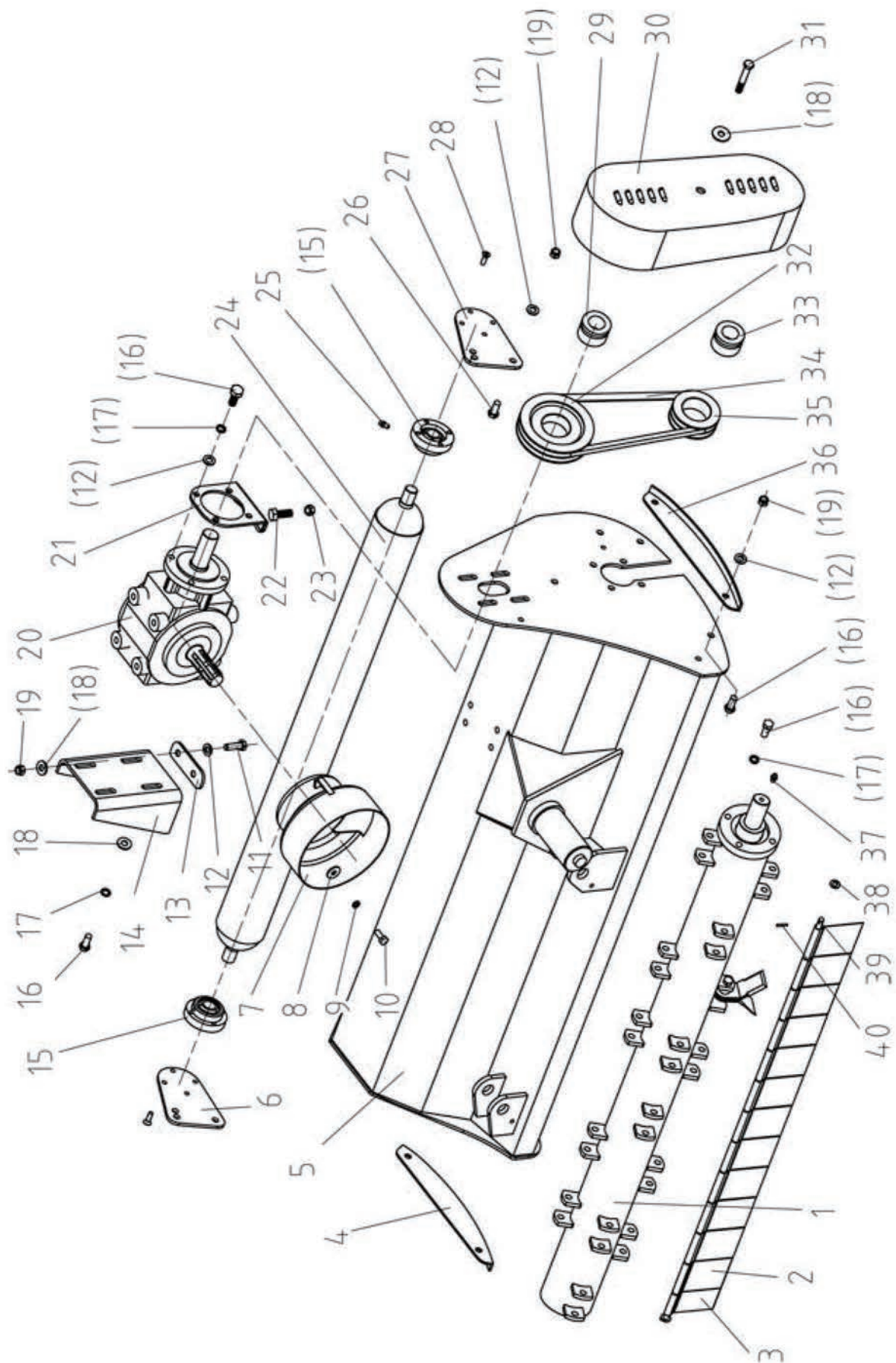
Before the machine is started up, check the following items regularly;

- Check oil level and add if required.
- Check and tighten all screws and nuts.
- Check the blade condition. Replace as required.
- Check the air hole on the gearbox. If it is blocked, clean or open the hole with compressed air.
- Don't spread oil or grease on the driving belts. If there is oil or grease on the belts, wipe the belts, to avoid slippage and premature wear.
- Check all moving parts and replace them if necessary.
- Check the protective covers are complete and operate correctly.

TROUBLE SHOOTING

FAILURE	CAUSE	SOLUTION	LEVEL OF DANGER
Excessive vibration of the machine	Broken flails	Replace broken flails.	Flails can be replaced by a competent operator. In the other cases, replacement must be done by specialised staff.
	Broken rotor support.	Replace rotor support with original parts.	
	Broken driving support shaft	Replace shaft support with original parts.	
	The worst: bent rotor	replace rotor with original parts	
The grass is not cut.	Broken flails.	Replace flails.	For replacement of flails, adjustment or replacement belts and fixing lock joints, see paragraph relating to maintenance.
	Belt slipping.	Adjust belt tension.	
	Broken belts.	Replace belts.	
	Pulleys slipping on shafts.	Fix pulley lock joints.	
	Broken gear box.	Repairing or replacement of gear box.	
Clogging of Hammers/ Knives	Rotor Speed is too low	Increase rotor speed	
Excessive wear of hammers/knives	Rotor speed is too high	Decrease rotor speed	
Flail Mower vibrates during works	Foreign matter stuck in between blades	Remove foreign matter	Secure flail mower on a mechanical stand before maintaining blades or rotor.
	Hammers/knives broken	Replace hammer/ knives	
	Bolts of the rotor shaft support have come loose	Lock bolts	

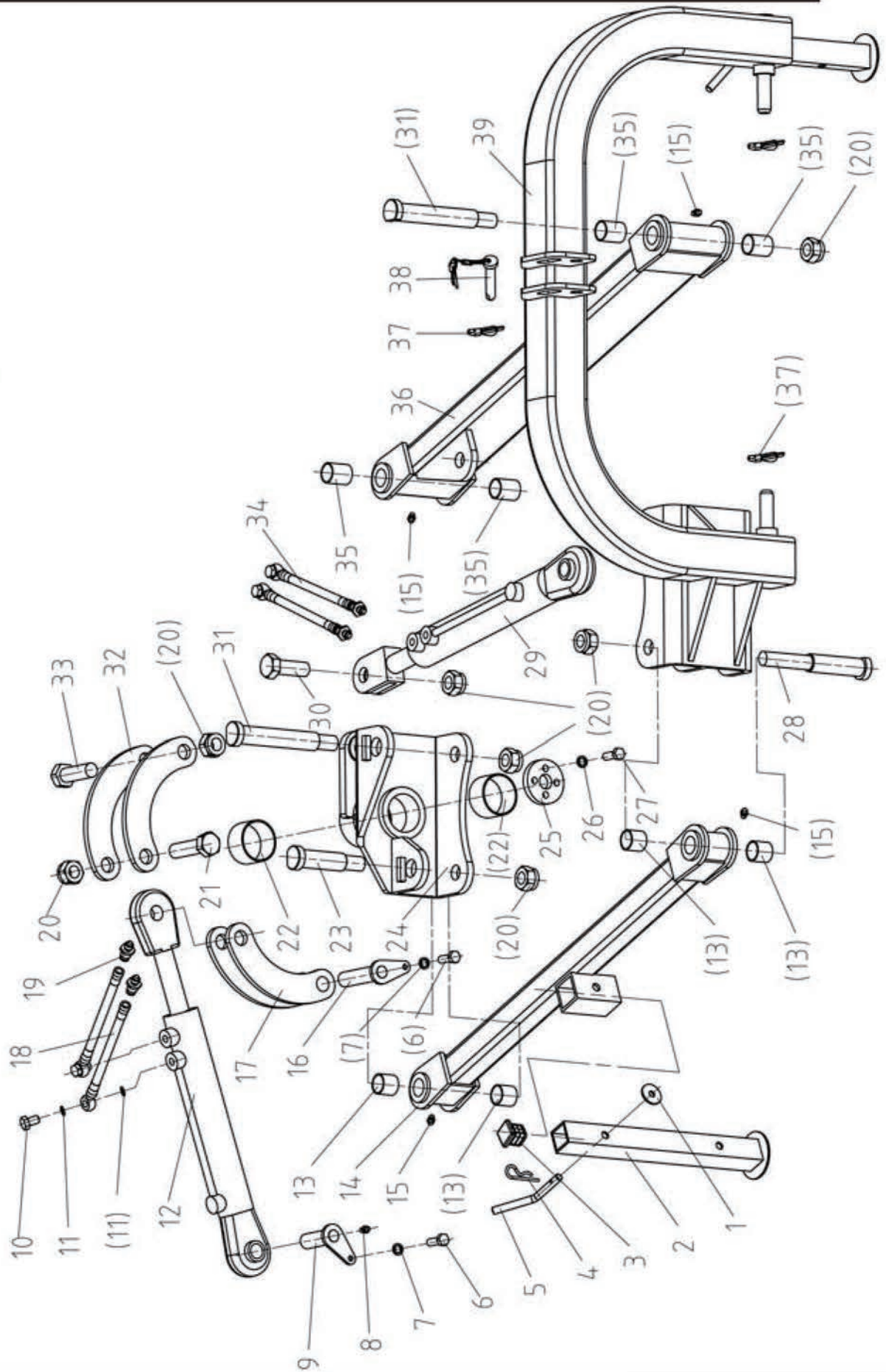
Flail Mower Assembly



Flail Mower Assembly

NO.	Part NO.		Name & Specifications	Quantity
	AGL-125	AGL-145		
1			Blade axle subassembly	1
2	EF100.00.122		Fender	12
3	EF100.00.121		Fender	1
4	EFAGL125.022		Skid Weldment (L)	1
5	EFAGL125.013	EFAGL145.013	The cover weldment	1
6	EFAGL125.101		Roller Support (L)	1
7	EF100.00.112		Guard shade	1
8	GB96-85		Plain washer 10	4
9	GB93-87		Spring washer 10	4
10	GB5783-86		Bolt M10X25	4
11	GB5783-86		Bolt M12X40	2
12	GB97.1-85		Plain washer 12	6
13	EFGC120.101		Splint	1
14	EFAGL125.015		Support for Gear box (big)	1
15	EF100.00.012		Bearing with flange UC205	2
16	GB5783-86		Bolt M12X30	18
17	GB93-87		Spring washer 12	16
18	GB96-85		Plain washer 12	7
19	GB6184-86		Locking nut M12	6
20	XH50.300Z.02		Gearbox assembly	1
21	EFAGL125.014		Support for Gear box (small)	1
22	GB5783-86		Bolt M12X45	2
23	GB6172-86		Nut M12	2
24	EFG120.012	EFG140.012	Roller weldment	1
25	GB1152-89		Oil cup M6	2
26	GB5783-86		Bolt M12X35	2
27	EFAGL125.101A		Roller Support (R)	1
28	GB2673-86		Hex.head bolt M8X25	8
29	JB/T7934Z3		Swellable sleeve 33X60	1
30	EFGC120.016		Belt cover	1
31	GB5782-86		Bolt M12X110	1
32	EFG120.106A		Big belt ptlley	1
33	JB/T7934Z3		Swellable sleeve 35X60	1
34	GB-T1154-97		Strap B991	3
35	EFG120.105A		Small belt ptlley	1
36	EFAGL125.022		Skid Weldment (R)	1
37	GB1152-89		Oil cup M8X1	2
38	GB97.1-85		Plain washer 10	18
39	EF100.00.123		Shaft for fender	1
40	GB879-86		Elastic cylindrical pin 4x22	2

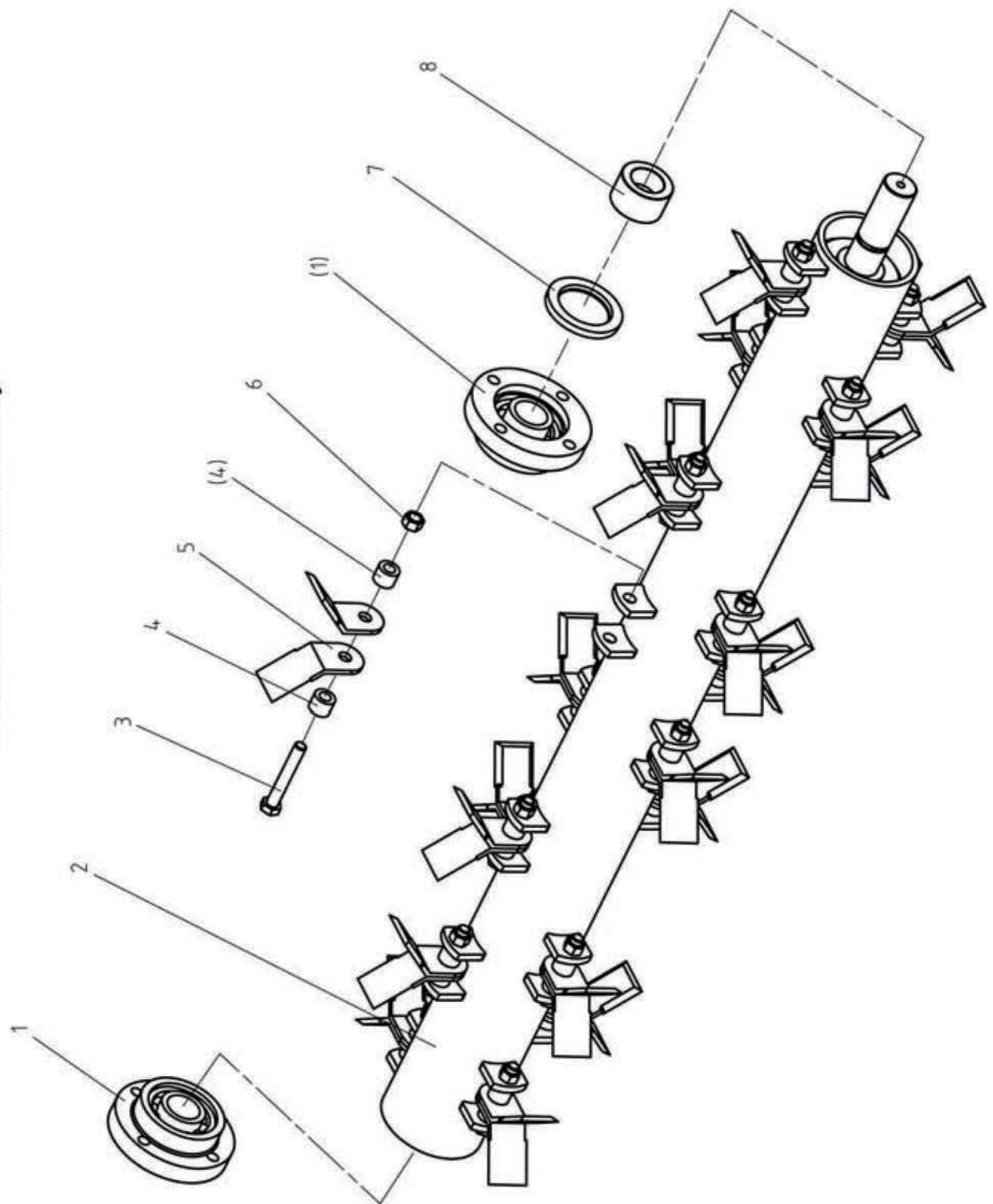
The Sway Frame Assembly



The Sway Frame Assembly

NO.	Part NO.		Name & Specifications	Quantity
	AGL-125	AGL-145		
1	GB96-85		Plain washer 12	2
2	EFAGF140.012		Supporting frame (L)	2
3	MFP120.00.101		Cover (B)	2
4			R PIN	2
5	EF100.00.111		Bent pin	2
6	GB5783-86		Bolt M8X16	2
7	GB93-87		Spring washer 8	2
8	GB1152-89		Oil cup M6	1
9	EFAGL125.103		Pin Shaft A	1
10	GB3451-83		Bolt M14X1.5	4
11	GB3451-86		Washer 14	8
12	EFAGL125.016		Side sway cylinder	1
13	SF-2		Sleeve for Small Sway Frame	4
14	EFAGL125.017		Sway Frame Weldment (small)	1
15	GB1152-89		Oil cup M10X1	5
16	EFAGL125.104		Pin Shaft B	1
17	EFAGL125.021		Inner Moon Plate	1
18	EFAGL125.025		Oil pipe (L)	2
19			Quick connector R1/2"	4
20	GB6184-86		Locking nut M24	7
21	GB5781-86		Bolt M24X90	1
22	SF-2		Sleeve for Rotating Center	2
23	EFAGL125.107		Pin (S)	1
24	EFAGL125.020		Rotating Center Weldment	1
25	EFAGL125.102		End Cover for Rotating Center	1
26	GB5783-86		Bolt M10X35	4
27	GB97.1-85		Plain washer 10	4
28	EFAGL125.108		Pin for Small Sway Frame	1
29	EFAGL125.018		Parallel movement cylinder	1
30	GB5781-86		Bolt M24X65	1
31	EFAGL125.109		Pin (L)	2
32	EFAGL125.105		Outer Moon Plate	2
33	GB5781-86		Bolt M24X70	1
34	EFAGL125.028		Oil pipe (S)	2
35	SF-2		Sleeve for Big Sway Frame	4
36	EFAGL125.019		Sway Frame Weldment (big)	1
37	200.56.011		Lock Pin	2
38	EF100.00.019		Pin shaft weldment	1
39	EFAGL125.011		Hanging weldment	1

Blade Axle Subassembly



CHAPTER 7. PARTS LIST - AGL MODEL

Blade Axle Subassembly

NO.	Part NO.		Name & Specifications	Quantity
	AGL-125	AGL-145		
1	UC207-Z		Bearing with flange 90207	2
2	EFG120.013	EFG140.013	Blade axle weldment	1
3	GB5782-86		Bolt M12X78	20
4	EF100.00.101		Sleeve	40
5	EF100.00.102		Blade	40
6	GB6184-86		Locking nut M12	20
7	GB13871-94		Oil seal FB55X80X8	1
8	RK120.109		Oil-sealing sleeve	1

Warranty Policy

This warranty refers to the product listed in this Operation Manual, sold or distributed by Midway Sales or through an authorised dealer. In order to qualify for this warranty, the registration form attached must be completed and returned to Midway Sales at their registered address within 10 days from date of purchase.

The Hanmey product shown in this operation manual is warranted against defects in workmanship and materials for a period of six (6) months from the date of purchase. In the case of products purchased specifically for agricultural use the warranty shall be extended to a period of twelve (12) months provided that this intended use is made known to the manufacturer/dealer at the time of purchase.

Hydraulic components, including cylinders and controls, are warranted against faulty parts and/or workmanship for a period of six (6) months commercial use/(12) twelve months agricultural use from the date of delivery of the implement to the original end-user.

This warranty is limited to faults or defects occurring in the product under normal operating conditions. The replacement or repair of any defective parts, or correction of operating parts under this warranty is made only after Midway Sales or their authorised representatives have examined the unit to their satisfaction. Implements are to be returned to Midway Sales or their authorised dealer, freight forward and return pre-paid. The manufacturer shall not be liable for indirect, special or consequential damages arising out of or in connection with the use or performance of the product including damage with respect to economic loss, loss of property, loss of revenue or profits, cost of removal, installation or reinstatement.

This warranty does not extend to cover any products manufactured to the purchaser's specifications, or modifications or repairs by customers or third parties, carried out without the written permission of the manufacturer.

This warranty does not extend to cover parts subject to normal wear such as, but not limited to chains, bearings, seals, filters and blades.

This warranty extends only to the original purchaser and is not transferable. This warranty does not extend to cover damage in transit, damage or failure caused by or attributed to Acts of God, exceeding the power limits specified in the technical data, abuse, using non-genuine parts, improper or abnormal use by the purchaser, its servants, employees or agents, faulty installation, improper maintenance or any repair other than those provided by the manufacturer or its duly authorised dealers.

This warranty does not authorise any person to create for it any other obligation or liability in connection with its products.

Other than the warranty hereby expressly given, the manufacturer makes no implied warranty of merchantability or fitness for purpose in so far as any such implied warranty is deemed to be given under any Commonwealth or State Law, then the manufacturer shall only be liable to the extent expressed in any such law.

PRODUCT IMPROVEMENT

Due to a continual product development program, Hanmey reserves the right to change models and specifications without notice.

