

Please read this instruction carefully before installing.

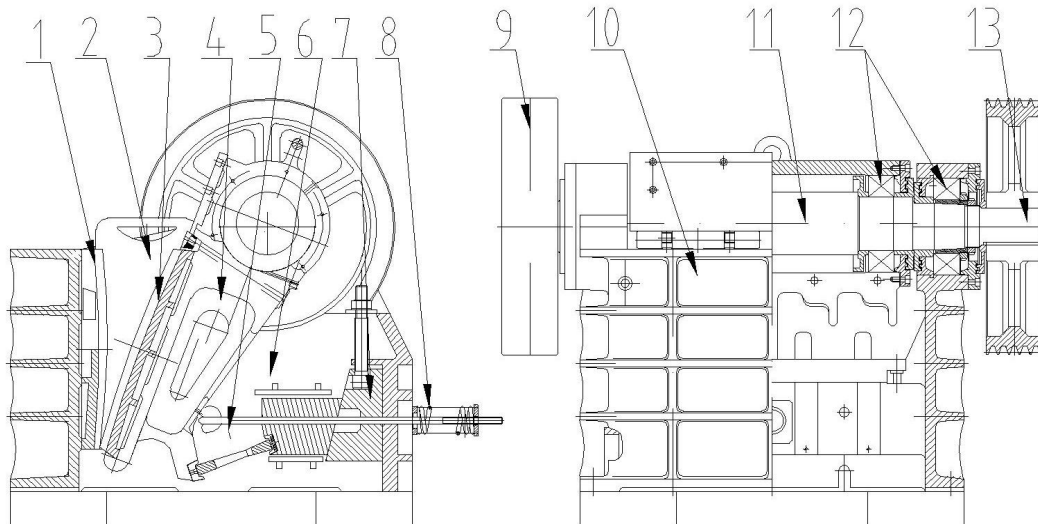
I.Usage

- (1) **This** machine is used in mining, metallurgical industry, building material, highway, railway, and chemical industry.
- (2) **It** can crush mining stones and rocks whose pressure strength is not more than 320M Pa.
- (3) **The** max size of the stuff should not exceed the standard in the following table.
- (4) **The** output will be affected when the stuff has high pliability.

II .Main technical data

Model	150X250	250×400	250×1000	250×1200
Feed Inlet Size(mm)	250X150	400×250	1000×250	1200×250
Max Feed Size (mm)	125	210	210	210
Bin Outlet Range (mm)	15-45	20-80	25-60	25-60
Shaft Speed(r/min)	285	290	330	330
Capacity (t/h)	1-4	5-20	15-50	25-60
Motor Model	Y132S-4	Y180L-6	Y225m-6	Y225m-6
Power (KW)	5.5	15	30	37
Dimension (mm)	750x760x940	1150X1075X1340	1992×1964 ×1386	2192×1900 ×1950
Weight (T)	0.9	2.5	6.5	7.7

III. Structure



- 1.fixed jaw plate 2.guard sheet 3.kinetic jaw plate 4.active jaw
 5.wrist plate 6.adjust seat 7.adjustable wedge 8.spring 9.flywheel
 10.frame 11.eccentric shaft 12.bearing 13.belt pulley wheel

IV. Work principle

The motor drives the moving jaw up and down through eccentric shaft. The angle between toggle plate and moving jaw increases when moving jaw moves up. So the moving jaw closes up the fixed jaw. The stuff will be crushed in this process. The angle between toggle plate and moving jaw decreases when moving jaw moves down, the moving jaw move away from fixed jaw by the pulling of rod and spring, the stuff crushed will be discharged from the output opening. This process will repeat. The moving jaw will crush and discharge the stuff circularly.

V. Installation and trial-run

- (5) **The** machine should be installed in the place avoiding rain and sunlight.
- (6) **The** motor should be installed behind the crusher; the direction of rotation should conform to the requirement, cannot reverse.
- (7) **The** machine should be installed on the concrete base, there should be a discharge chute in the concrete base, and the angle

should exceed 50 °. The base condition can be decided according to the materials and transporting equipment.

- (8) **Loosen** the spring before adjust the discharge opening. After adjusting well, fasten the spring till the working noise of toggle plate and toggle plate seat is minimal, and the toggle plate doesn't fall down.
- (9) **Check** all the bolts are fastened before trial run.
- (10) **Check** the lubrication before trial run.
- (11) **Turn** the flywheel by hand first, trial run after confirmation that there is no sluggish. There should be no impact, oil leak, shake of flywheel, and loose in the two hours trial run. Temperature rise should not exceed 35°C as well. If any of the above problems happen, stop the machine and examine at once.
- (12) **Trial** run with loading for ten hours, if the stuff is hard and the temperature of bearing doesn't exceed 70°C, there is no above problem; the machine can be put into use.

VI. Use information

- (13) Preparation before start-up.
 - ① **Check** the lubrication. (We just oil the machine for trial run)
 - ② **Check** all the parts are fastened.
 - ③ **Check** the drive belts, if the belts or flywheel has been dirtied by oil, clean it immediately.
 - ④ **This** machine should be started up without loading, make sure that there is no stuff between moving jaw and fixed jaw.
 - ⑤ **When** the stuff is very hard, the max feed size should less than 2/3 of the input opening.
- (14) Usage and maintain
 - ① **Start** up when the drive part is normal.
 - ② **This** machine should be started up without loading.
 - ③ **The** stuff should be fed steadily.
 - ④ **Temperature** rise should not exceed 35 °C , the max temperature should not exceed 70°C. Otherwise, stop the machine and examine at once.
 - ⑤ **Stop** feeding before stopping the motor. When all the stuff is discharged from the machine, stop the machine.
 - ⑥ **If** the machine is blocked by the stuff, stop the machine at

once. Startup the machine again when the machine is clean away.

- ⑦ **Keep** the back of moving jaw clean.
- ⑧ **The** jaw plate can be reversed when one end is abraded.

(15) Lubrication

- ① **Check** the lubrication frequently.
- ② **The** lube used in the machine depends on the place and temperature.
- ③ **Change** the lubricating oil once every three months. Before changing the oil, wash the bearings carefully with clean petrol or coal oil. The antifriction grease added to the bearings should be 50~70% of its capacity.
- ④ **The** contacting part of toggle plate and toggle plate seat should be oiled before start-up.

(16) Problem and solution

Possible problem	Cause	Solution
The flywheel rotates but cannot crush, the toggle plate falls down	1.spring broken	1.replace spring
	2.rode broken	2.replace rode
	3.rode bolts loose	3.fasten the bolts
Moving jaw plate jump	Jaw plate bolts loose	Fasten the bolts
Fixed jaw plate jump	Jaw plate bolts loose	Fasten the bolts
The temperature of bearing too high	1.lack of oil	1.Add more oil
	2.oil dirty	2.Replace the oil
	3.bearing broken	3.Replace the bearing
Noise in the machine back	Rode loose, toggle plate beat the moving jaw and liner gasket	Fasten the rode bolt
Spring broken	Spring not loose when adjusting the discharging opening	Fasten the rode bolt

VII. Easy damage parts

- (17) Toggle plate (2) liner plate (3) fixed jaw plate (4) moving jaw plate

VIII. Safety rule

- (18) **Operator** should be trained.
- (19) **It** is forbidden to watch the machine from the top of the machine when the machine is running.
- (20) **It is** forbidden to adjust, clean and repair the machine when the machine is running.
- (21) **It** is forbidden to move the stuff from input opening and crushing body when the machine is running.
- (22) **The** electric equipment should be grounded and the electric line is reliable and insulating, installed in the plastic pipe.

IX. Base chart

- (23) Introduction
 - ① **This** base chart is designed only for the end user when make the bolts hole.
 - ② **The** depth can be adopted according to the base chart; it can be changed depending on difference landform and equipment.
- (24) Base chart