

Content

一、 JY-2000 system introduction	2
1. 1 Summarize	2
1. 2 System runtime environment	2
1. 3 Basic function	2
二、 Operation introduction	
1、 Enter JY-2000 system	3
2、 Image display	3
2. 1 Image switch	3
2. 2 VGA monitor adjustment	3
3、 Start recording	4
4、 Stop Recording	4
5、 Playback recording	5
6、 System configuration	6
6. 1 System configuration&recording setup	6
6. 2 Display setup	6
6. 3 Schedule recording setup	6
7、 Motion detection	7
8、 Pre-alarm setup	8
9、 PTZ control	8
10、 Log	9
11、 Network transmission	10
12、 File management	11
三、 packing list	11

JY-2000 DVR System Operation Introduction

一、System introduction:

1. 1 Summarize

JY-2000 digital video recorder system (software and hardware products) contains multiview display, hard disk recording, network image transmitting, PTZ control and alarm control functions which bases on Windows2000/xp and adopts MPEG-4 compressor technic. It is a high steady and reliable system Compared with similar products in the market, the features of our system are perfect function and convenient operation.

1. 2 System operating environment

- Operating system: Windows2000/xp

1. 3 Basic function

◆ Image display:

D1 high resolution 704*576
Display parameter setting separately
Support image shielding
Capture image

◆ Recording:

Every channel 25 frame/s, with audio, support max to 24 channels
Recording quality have 3 optional levels and choose add audio. Support setting FPS
Recording manners: schedule recording, manual recording, motion detection and alarm linkage recording

Playback review:

Playback authority setting
Playback fast/slowly
Support capture image during the video, preview and print

PTZ control:

Achieve PTZ control with decoder
Support multidecoder protocol

Alarm control:

Motion detection alarm
Detector alarm
Auto record while alarm
Alarm output linkage

◆ Network transmission:

Support TCP/IP protocol, realize network transmission

Administer System security log:

Computer records all the operation for system maintenance and examining security.

二、 Operation introduction:

1、 Enter JY-2000 DVR system:

double clicking the icon on desk, there will spring a dialog window and wait you to input user name and pass word. (ex-factory default: user name is “manager” and password is “1234”), which show as follows:



After input correct user name and password, click “yes” to enter user interface or “set password” to change user name and password.



(图 3-1)

2、Image display:

2. 1 image switch:


- Double click a image of one camera ,it will switch to signal image.Then double click this image, it will return to multiview display.。
- Click buttons of 1 channel,4 channel,9 channel and 16 channel to chose image display.

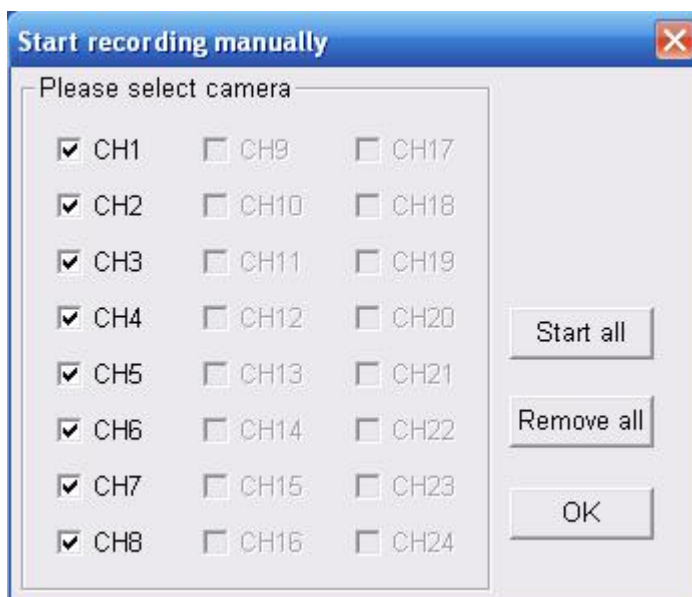
2. 2 display effect adjustment:



- Click one image and press button to adjust the color,contrast,bright and volume.Click “default” to come back to ex-factory default.

3、Start recording

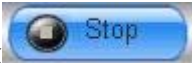
- Click , will spring a menu with three options, "start manual recording", "start schedule recording" and "start all recording".
- Click "start manual recording", spring a dialoge window as follow:



Select the channel to be recorded and then click "yes" button. Then the system will start video recording and the singal light will change into red

- Click "start schedule recording", then the system will start video recording as setting.(refer to "schedule recording" in "system configuration")
- Click "start all recording", then all of the "start manual recording" and "schedule recording" will be start at same time.

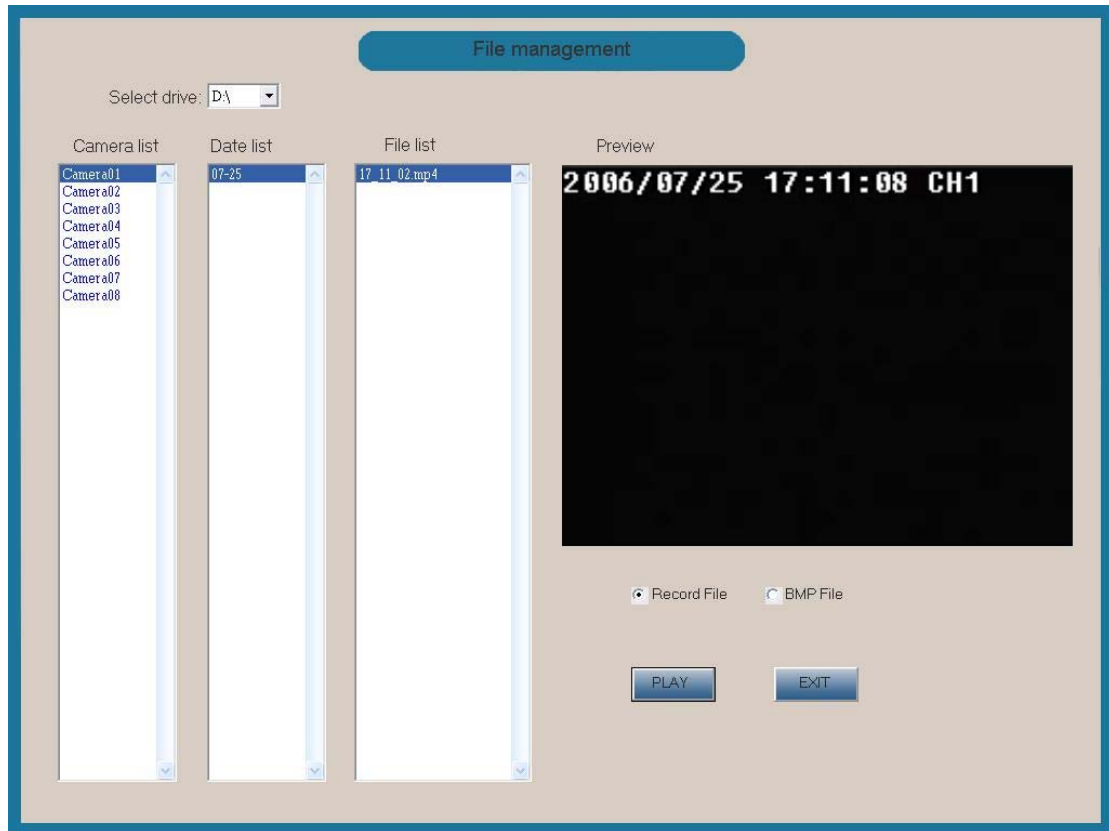
4、Stop recording

- Click , spring a menu with three options, "stop schedule recording", "stop manual recording" and "stop all recording". Select one and stop corresponded recording. Notice: click "stop all recording", then "schedule recording" will stop. If you want to keep schedule recording going, you should click "stop manual recording".

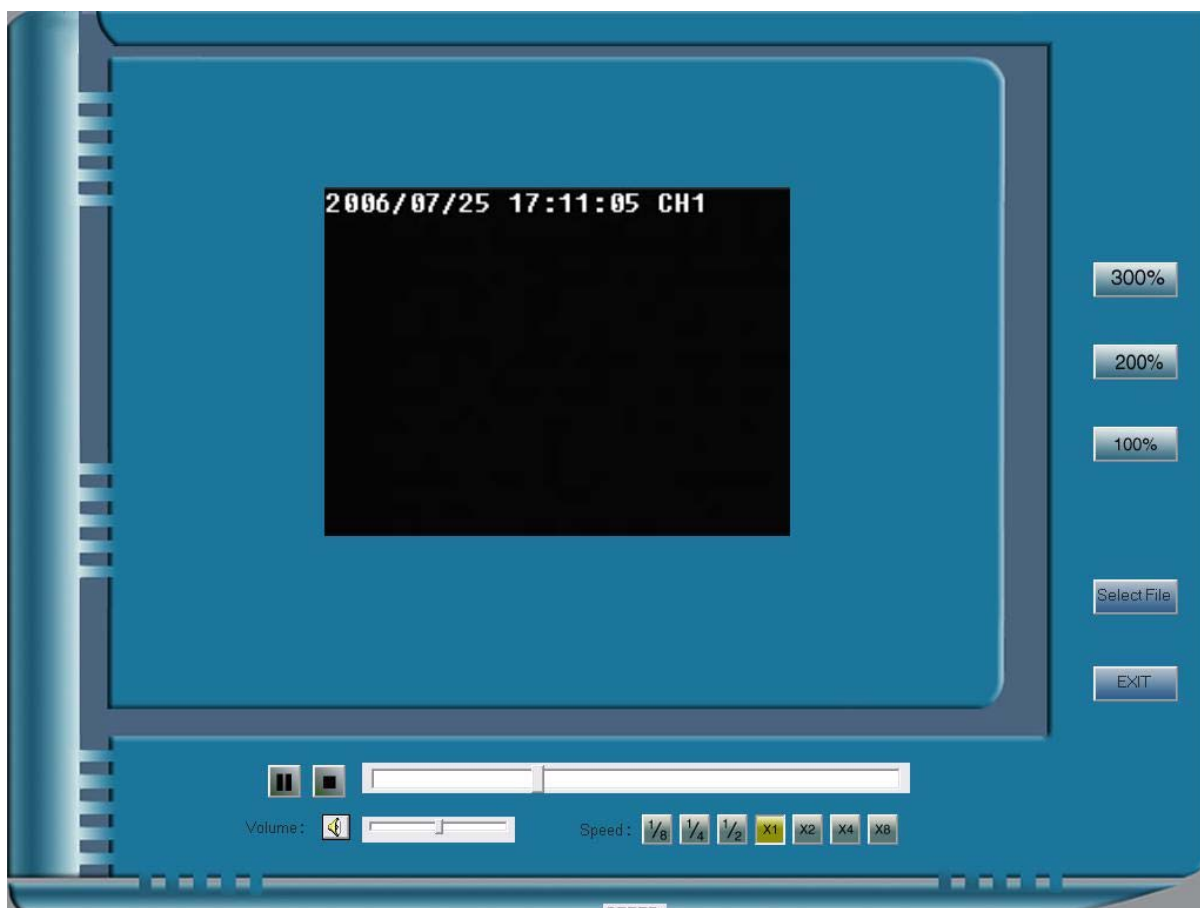
Memory while recording: auto reset to the recording state of the last time when enter into system.

5、Recording playback

- Click , spring a window of "file management", as follow:

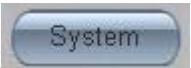


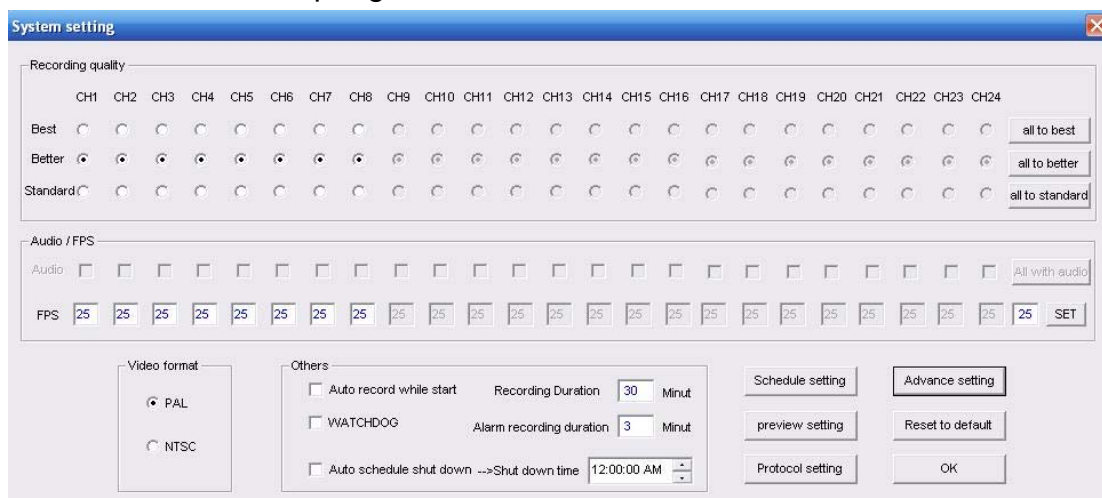
- Select driver ,camera and date,then the document list will show corresponded recording file.
- Select recording film,click “play” to enter into the play window as follow:



6、System configuration

6. 1 System setting and recording setting

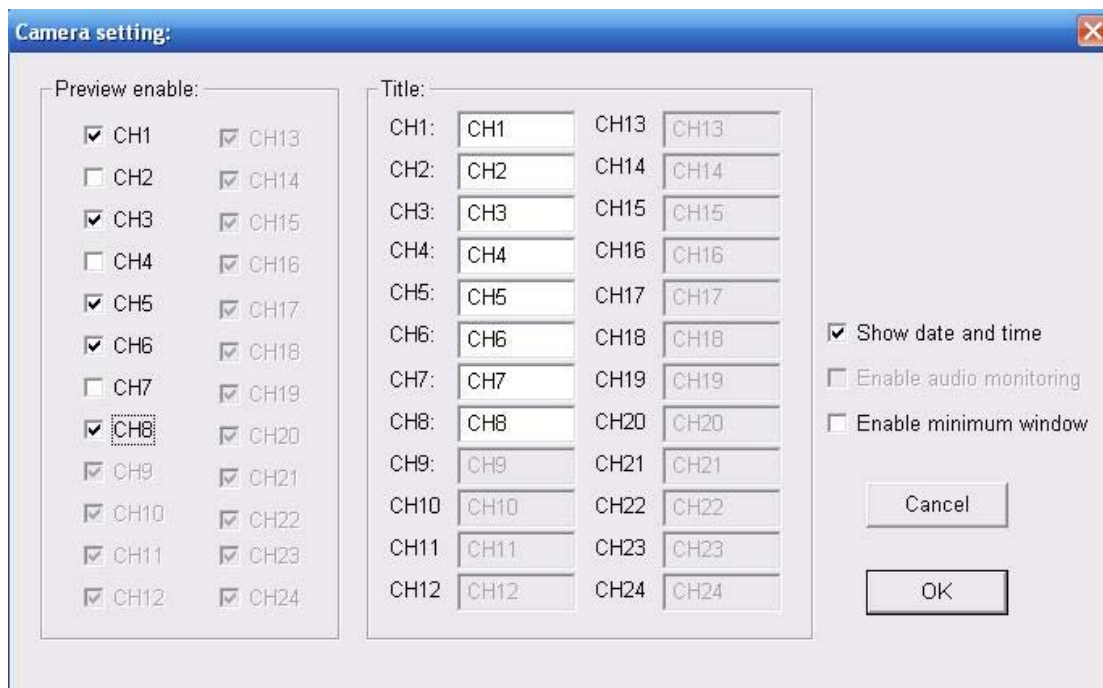
click , spring a window as follow:



the setting according to user's requirement.

6. 2 Image display setting (only administrator can enter)

- Click “image display setup”, spring
- a window as follow:



Support select display or shield of any channel and screen shielding do not effect recording this channel.

Support modify the name of camera.

Support display or not display camera mark and date.

6. 3 Schedule recording setup

- Click “schedule recording setup”,spring a window as follow:

Schedule recording setting

Schedule recording timetable:

	Monday	Tuesday	Wed.	Thursday	Friday	Saturday	Sunday
00H							
01H							
02H							
03H							
04H							
05H							
06H							
07H							
08H							
09H							
10H							
11H							
12H							
13H							
14H							
15H							
16H							
17H							
18H							
19H							
20H							
21H							
22H							
23H							

Note:

1. Click to blue color to highlight recording time, click again to disable

2. Click side to select whole row or column

Please select camera

Camera01

Apply to all cameras

OK

do this according to cue.

The schedule recording timetable come into effect after click




to select “start schedule recording” or “start all recording”.

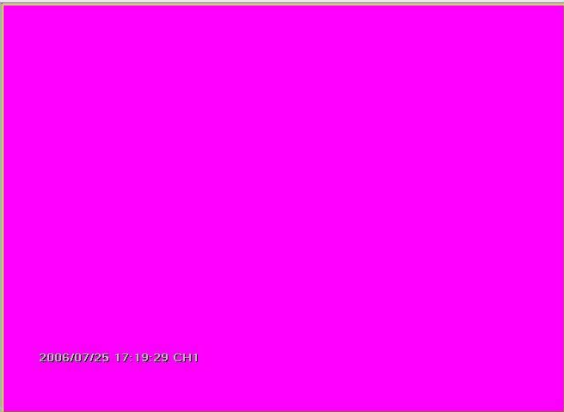
Schedule recording memory: after start schedule recording, if you don't stop schedule recording, the schedule recording timetable will start when next time enter into the system.

7、Motion detection



- Click , spring a menu with three options, “start motion detection”, “stop motion detection” and “motion detection setup”
- Click “motion detection”, spring a window as follow:

Motion detection setting



Note:

1. Please use mouse to select the motion detection area on the left window
2. Motion detection sensitivity: 1. Low 6. High

☒ When Detect motion start CH01 recording

☐ When detect motion start all recording

Motion detection sensitivity level (1-6)

Select camera


Camera01

Detection Area	X1	Y1	X2	Y2

select camera,set motion detection district and detection sensitivity.
 (motion detection sensitivity range: 0(low),6(high))

- Click “start motion detection”,then motion detection will start accroding to setup.
- Click “stop motion detection’,then stop motion detection.
- Motion detection monory:the next time enter into the system will auto reset to the last time state when closed system.

8、Pre-alarm setup

- click , spring a dialoge window as follow:

Alarm display:

Alarm setting and display

display:

1 2 3 4 5 6 7 8 9 10 11 12 13 14 15 16

Set alarm: ☐ ☐ ☐ ☐ ☐ ☐ ☐ ☐ ☐ ☐ ☐ ☐ ☐ ☐ ☐ ☐

Remove alarm: ☒ ☒ ☒ ☒ ☒ ☒ ☒ ☒ ☒ ☒ ☒ ☒ ☒ ☒ ☒ ☒

Schedule alarm setup:

Alarm time: Hour Minute

Remove alarm time: Hour Minute

☒ Instant set alarm

☐ Schedule alarm


☐ Record all when alarm

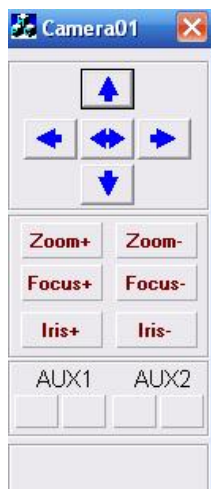
Note: No matter you select instant alarm or schedule alarm, alarm will act follow the area you selected

pre-alarm part or all district accroding to requirements.
 Auto-start recording after alarm.

If select “record all when alarm”, all camera will start recording while it alarm.; if not select,only current one will record when alarm.
 “Message”button,stop output voltage of 5V for alarm sound.
 ”Reset output”button, it is a switch of reset alarm relay.
 Click “alarm record” to browse alarm log.(only administrator can enter)

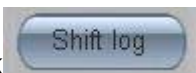
9、PTZ control

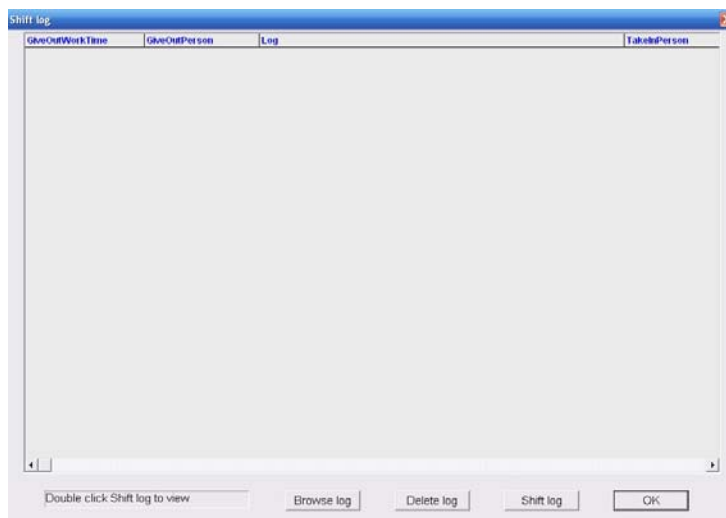
- Click  , spring a window as follow:click the image which you want to control, then PTZ can be controlled by this control panel



- AUX1, AUX2 are two assistant switches for decoder control(can control rain strip,light ,etc.)

10、Log

- Click  , spring a interface as follow:



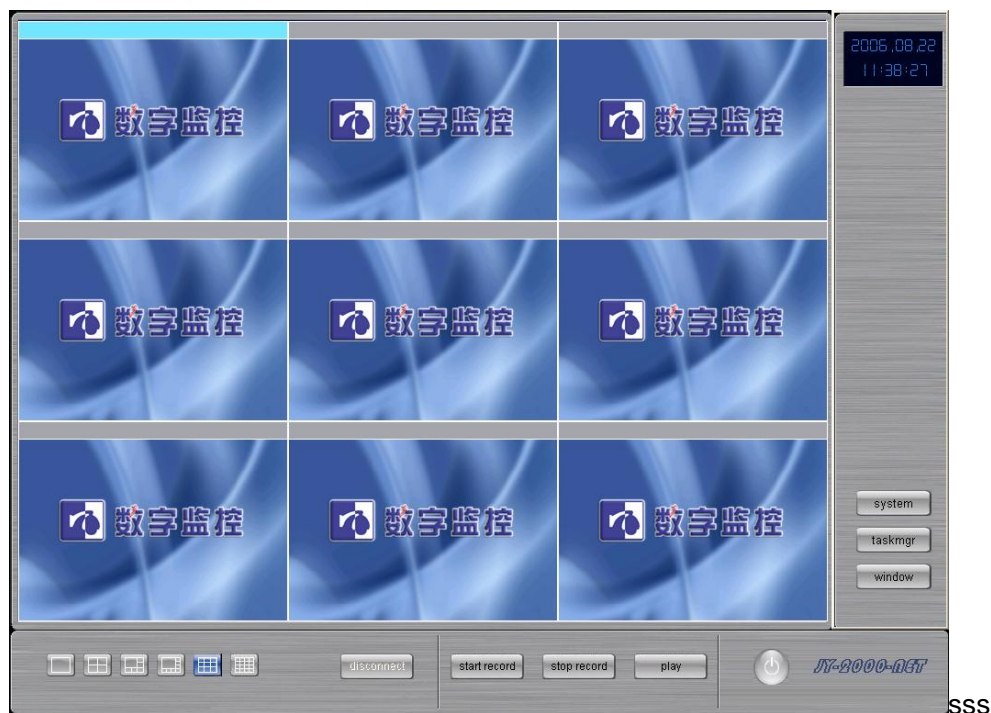
- Click “log”,spring a window as follow:



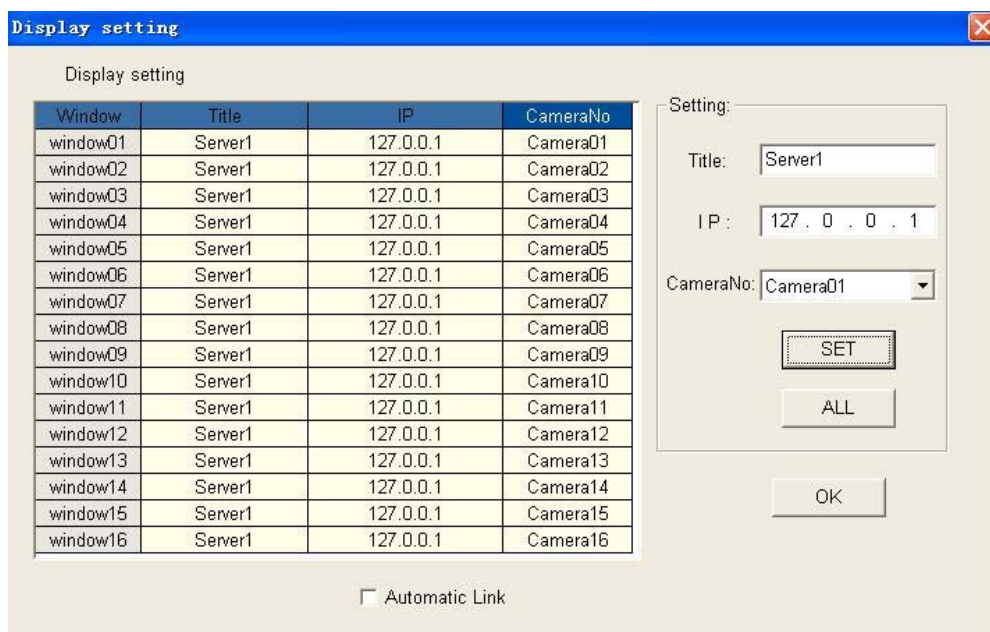
- Input take-in-worker 's user name and password, and add log ,then click “yes” to finish shift register.
- Double click “log ”in the table to browse contents.
- Click “browse log” to browse operation log.(only administrator can enter)

11、 Client-side internet trasmit

Run client-side program” JY-2000_NET.exe”, spring a dialog window to wait for input user name and password(default:user name is manager and password is “1234”).After input the right user name and pasword ,click “yes” to enter into the interface as follow:



- Click “system setup”,spring a dialog window as follow:



Setup the server IP,camera mark ,etc.of display image

Click “yse” to return main interface.

- Select display channel to start to transmit image of this channel.
- Click “start record” to record.
- Click “PTZ control” to control PTZ by network.
- Click “cut down” to stop transmit current image.

12、 Disk management （auto operate by system）

- Storage of record data in disk D , when current disk is full,then it will be turn to the next one.
- After all the disk get full,system will delete record data of the earliest and make new storage to instead of.
- Storage and delete file all auto operated by system.

Notice :If there is still some problem after operating as above ,please contact with supplier.